

Newly built 3 bed, 2 bath apartment for sale close to Chambéry centre with south facing terrace and parking



INFORMATION

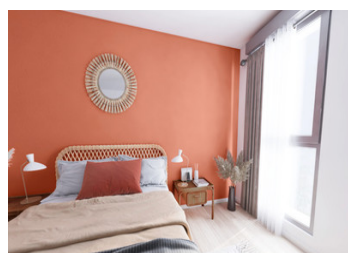
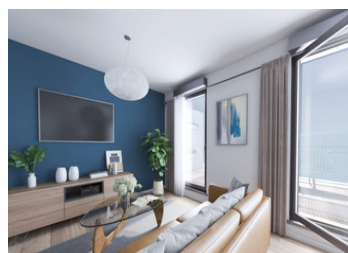
Town:	Chambéry
Department:	Savoie
Bed:	3
Bath:	2
Floor:	83.7 m2
Outside Space:	11 m2

IN BRIEF

4 Brand new spacious 3 bed apartments, available now, already completed in a new development close to the centre of historic Chambéry and all ready to move in, ranging from €353,089 to €428,399

Each one a superb investment with great rental potential or why not buy all 4 for €1,556,562?

This apartment, on the first floor, is very spacious with 83.7m2 of living space, and a south facing balcony terrace. 1 bedroom, guest suite or work space with shower room and toilet and a separate entrance from the corridor. Or access direct from the apartment with an open plan living room, going on to the terrace, 2 bedrooms, shower room and WC.



ENERGY - DPE

DPE not required.

NB. Quoted prices relate to euro transactions. Fluctuations in exchange rates are not the responsibility of the agency or those representing it. The agency and its representatives are not authorised to make or give guarantees relating to the property. These particulars do not form part of any contract but are to be taken as a general representation of the property. Any areas, measurements or distances are approximate. Text, photographs and plans, where applicable, are for guidance only. Leggett and its representatives have not tested services, equipment or facilities and cannot guarantee the same.

Particulars for off-plan purchases are intended as a guide only. Final finishes to the property may vary. Purchasers are advised to engage a solicitor to check the plans and specifications as laid out in their purchase contract with the developer.



DESCRIPTION

The apartment comes with 2 adjacent parking places included worth €36,000 (€18,000 each). The building is being landscaped and planted with hanging plants with watering via collected rain water. Great public transport from the door to get into the centre of Chambéry in minutes and various shops, boulangerie etc are literally on the doorstep.

The apartment

- Living room / kitchen – 31m²
- Terrace – 10.8m² south facing
- Bedroom 1 – 18m² with on suite shower room/WC and 2 entrances allowing flexible access
- Bedroom 2 – 12.9m²
- Bedroom 3 – 9.2m²
- Shower room – 4.5m² with large walk-in shower
- WC

Information about risks to which this property is exposed is available on the Géorisques website : <https://www.georisques.gouv.fr>

LOCAL TAXES

Taxe habitation: EUR

NOTES