

Charming 3/4 bedroom hamlet home with enclosed garden



INFORMATION

Town:	Saint-Front-la-Rivière
Department:	Dordogne
Bed:	4
Bath:	2
Floor:	160 m2
Plot Size:	5500 m2

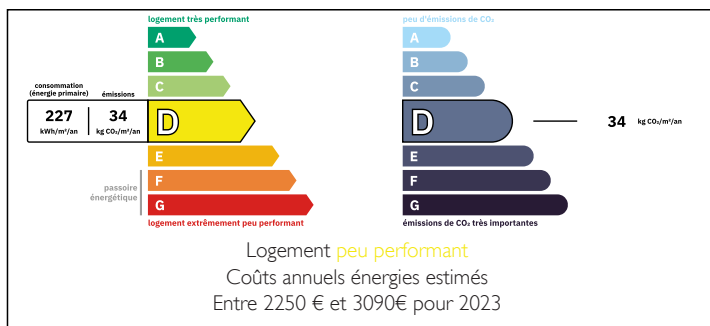
IN BRIEF

This traditional and spacious farmhouse from the 1850's has been completely renovated to a modern standard and will be sold fully furnished . It has 4 bedrooms and 2 bathrooms, a large open plan kitchen/diner and separate living room perfectly cosy for those winter nights.

A large terrace on two levels gives you plenty of outside dining for hot summer nights and fully enclosed garden for accommodate goats, sheep, donkeys or chickens. This is picturesque spot in the rolling hills of the north Dordogne

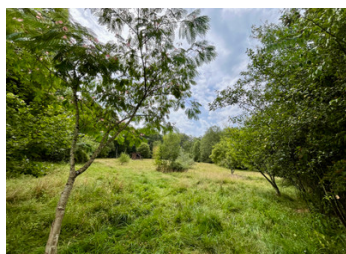
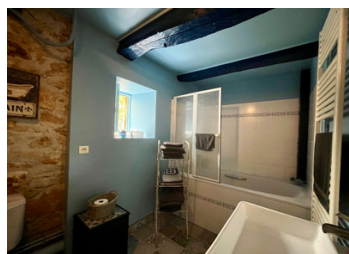


ENERGY - DPE



NB. Quoted prices relate to euro transactions. Fluctuations in exchange rates are not the responsibility of the agency or those representing it. The agency and its representatives are not authorised to make or give guarantees relating to the property. These particulars do not form part of any contract but are to be taken as a general representation of the property. Any areas, measurements or distances are approximate. Text, photographs and plans, where applicable, are for guidance only. Leggett and its representatives have not tested services, equipment or facilities and cannot guarantee the same.

Particulars for off-plan purchases are intended as a guide only. Final finishes to the property may vary. Purchasers are advised to engage a solicitor to check the plans and specifications as laid out in their purchase contract with the developer.



DESCRIPTION

Ground floor

Living room 26m2

Kitchen 27m2

Pantry with potential of 47m2

Master bedroom 29m2

Bathroom 6m2

Second bedroom 14m2

1st Floor

Bedroom one 26m2

Bedroom two 14m2

landing/office 26m2

Bathroom 3m2

The village of St Front la riviere is just a 2 min drive from the property where you will find a Bar/Resturant and post office.

The next village along is 5mins in car, St Pardoux la riviere which offer all your daily need including a bakery, supermarket, butcher and florist.

Please contact the agent for more information.

Information about risks to which this property is exposed is available on the Géorisques website : <https://www.georisques.gouv.fr>

LOCAL TAXES

Taxe habitation: EUR

NOTES