

## Souillac Golf & Country Club: Spacious 3 bed property with A/C & golf views .Lot 46 : Midi Pyrenees



## INFORMATION

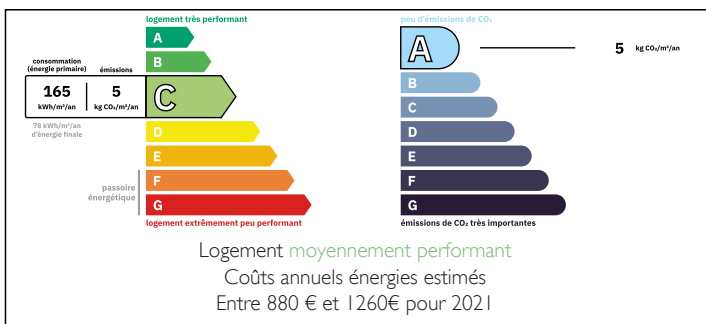
Town:	Lachapelle-Auzac
Department:	Lot
Bed:	3
Bath:	3
Floor:	91 m2
Plot Size:	599 m2



## IN BRIEF

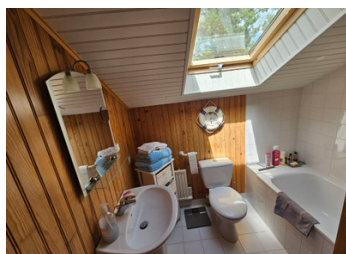
Magnificent 3 bedroom 3 bathroom centrally heated and air conditioned freehold offering a prime location on the Souillac Golf & Country Club close to central facilities in the Clubs La Colline hamlet. Large elevated decking offering outside dining and views on to the course. Property with secluded private position and good parking. Lot Midi Pyrenees . Fully furnished. Rental & maintenance services. International airport 15 mins connections to London City & Paris Orly. . A20 Motorway Paris/Toulouse 10 mins.

## ENERGY - DPE



NB. Quoted prices relate to euro transactions. Fluctuations in exchange rates are not the responsibility of the agency or those representing it. The agency and its representatives are not authorised to make or give guarantees relating to the property. These particulars do not form part of any contract but are to be taken as a general representation of the property. Any areas, measurements or distances are approximate. Text, photographs and plans, where applicable, are for guidance only. Leggett and its representatives have not tested services, equipment or facilities and cannot guarantee the same.

Particulars for off-plan purchases are intended as a guide only. Final finishes to the property may vary. Purchasers are advised to engage a solicitor to check the plans and specifications as laid out in their purchase contract with the developer.



## LOCAL TAXES

**Taxe foncière: 888 EUR**

**Taxe habitation: EUR**

## NOTES

## DESCRIPTION

Located on managed child friendly and safe resort complex with pools, tennis courts, 18 hole golf course this well maintained 3 bedroom 3 bathroom detached freehold property comes with turnkey rental & mgt facilities.

Ready for immediate occupation & rental.

Detached wooden Lodge comprising: Individual parking space for two vehicles porch & entrance area. Spacious grounds around the property with wonderful views out on to the golf course and woods at the rear of the property. Large shed with electricity.

Ground Floor: Leading off the entrance porch, ground floor shower & WC, open plan lounge & dining area. 1 x Bedroom.

Kitchen: Including fully fitted kitchen with oven, hob, dishwasher, fridge freezer & washing machine.

A large set of patio doors lead on to the terrace area from the lounge area giving a wonderful sense of light and space to the rooms.

1 st Floor: Family bathroom with bath, basin & WC then 2 further bedrooms one Master bedroom with ensuite bathroom & generous built in storage units. Utilities provided are mains electricity, water, telephone, satellite TV (sky sports). Air conditioning throughout the property.

Located in the renowned "Dordogne Valley" close to the historic market town of Sarlat & World Heritage Site of Rocamadour lies the small resort of Souillac Golf & Country Club. The Club is 10 minutes from the local town of Souillac which offers a full range of amenities including year round weekly market, shops, doctors, dentist & schools.

Lodge 18 La Colline is ideally located within this...