

Approximately 1 acres of building land hidden by hedges yet a fantastic view of a medieval hilltop village

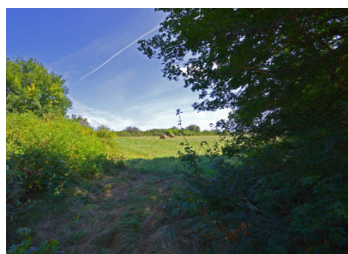


INFORMATION

Town:	Gabillou
Department:	Dordogne
Bed:	0
Bath:	0
Floor:	0 m2
Plot Size:	5000 m2

IN BRIEF

The hedges provide a useful screening from the country lane and houses further along the valley leaving a spectacular view of a Chateau to the left and an ancient medieval village and church on a hill in front above the treeline. A truly beautiful spot!



ENERGY - DPE

DPE not required.

NB. Quoted prices relate to euro transactions. Fluctuations in exchange rates are not the responsibility of the agency or those representing it. The agency and its representatives are not authorised to make or give guarantees relating to the property. These particulars do not form part of any contract but are to be taken as a general representation of the property. Any areas, measurements or distances are approximate. Text, photographs and plans, where applicable, are for guidance only. Leggett and its representatives have not tested services, equipment or facilities and cannot guarantee the same.

Particulars for off-plan purchases are intended as a guide only. Final finishes to the property may vary. Purchasers are advised to engage a solicitor to check the plans and specifications as laid out in their purchase contract with the developer.



DESCRIPTION

5000 m² or 1.24 acres bordered on 3 sides by ancient hedges.

Information about risks to which this property is exposed is available on the Géorisques website : <https://www.georisques.gouv.fr>

LOCAL TAXES

Taxe habitation: EUR

NOTES