

Stone house, known as "Le Porche" located in one of the most beautiful villages of the Black Perigord.



INFORMATION

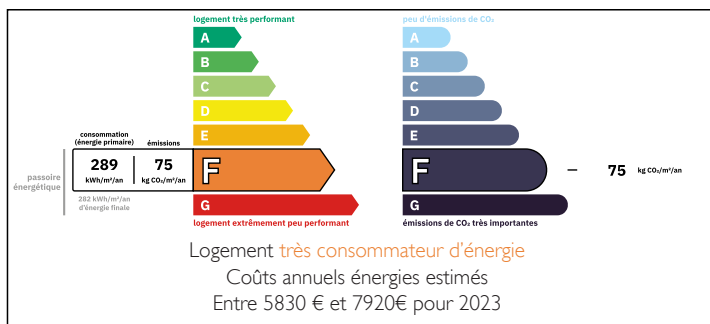
Town:	Limeuil
Department:	Dordogne
Bed:	4
Bath:	2
Floor:	152 m2
Plot Size:	749 m2

IN BRIEF

This beautiful stone building is situated in a dominant position, in the 14th century, the house on the porch of Limeuil marked the boundary between the upper and lower village and was originally fitted with heavy wooden doors to ensure the protection of the inhabitants. The house was rebuilt in the 15th century. The arch of the opening is semicircular. The upstairs window, like the roof, certainly dates from the 18th century. The house is composed of a large living/dining room with a beautiful fireplace, four bedrooms, an equipped kitchen. Outside there is a nice terrace with a covered part and a terraced garden with a nice view. A must see!

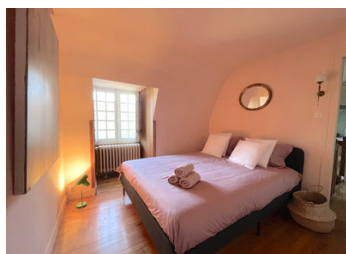


ENERGY - DPE



NB. Quoted prices relate to euro transactions. Fluctuations in exchange rates are not the responsibility of the agency or those representing it. The agency and its representatives are not authorised to make or give guarantees relating to the property. These particulars do not form part of any contract but are to be taken as a general representation of the property. Any areas, measurements or distances are approximate. Text, photographs and plans, where applicable, are for guidance only. Leggett and its representatives have not tested services, equipment or facilities and cannot guarantee the same.

Particulars for off-plan purchases are intended as a guide only. Final finishes to the property may vary. Purchasers are advised to engage a solicitor to check the plans and specifications as laid out in their purchase contract with the developer.



DESCRIPTION

GROUND FLOOR entrance leading to living room-dining room.

Fitted kitchen with toilet and washbasin.

A bedroom, shower room and separate toilet.

FIRST FLOOR landing with office area leading to a bedroom, bathroom, wc, two bedrooms in a row with the possibility of making a third one which is currently a laundry room.

OUTSIDE terrace with a covered area, shaded terrace garden with a dominant view, cellar and garage.

This property is located on a medieval village of character, which stands among the jewels of the Périgord, labelled in 1990 "One of the Most Beautiful Villages in France". At the confluence of the Dordogne and Vézère rivers.

Information about risks to which this property is exposed is available on the Géorisques website : <https://www.georisques.gouv.fr>

LOCAL TAXES

Taxe foncière: 767 EUR

Taxe habitation: EUR

NOTES