

Detached period cottage, with 5 bedrooms. Period features, beams and original fire places. Terrace with pool.

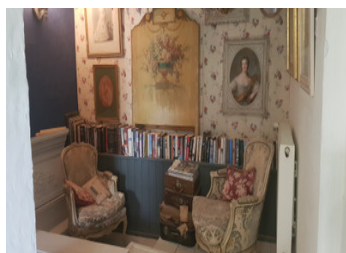
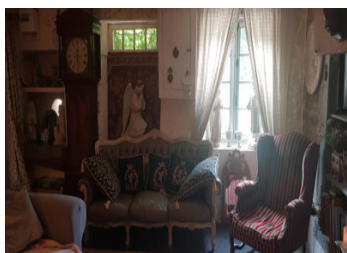
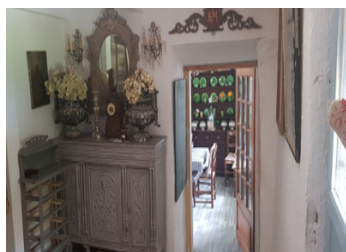


## INFORMATION

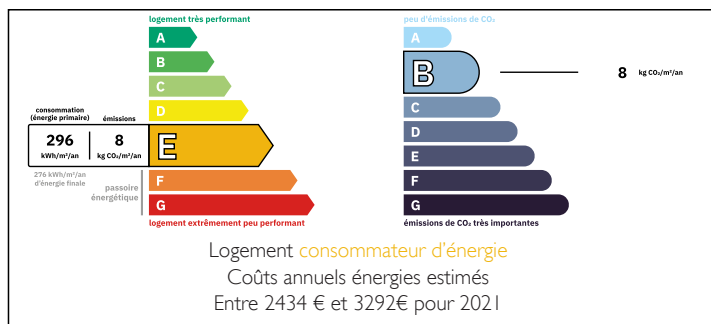
Town:	Fursac
Department:	Creuse
Bed:	5
Bath:	3
Floor:	160 m2
Plot Size:	500 m2

## IN BRIEF

This period country chocolate box cottage boasts five bedrooms and numerous original features. It has an established, charming walled country cottage garden. Located on the outskirts of a small hamlet, it enjoys a tranquil setting with no passing traffic and is approximately a five-minute drive from local amenities.

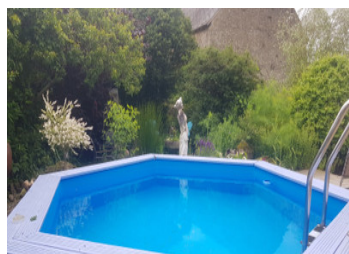


## ENERGY - DPE



NB. Quoted prices relate to euro transactions. Fluctuations in exchange rates are not the responsibility of the agency or those representing it. The agency and its representatives are not authorised to make or give guarantees relating to the property. These particulars do not form part of any contract but are to be taken as a general representation of the property. Any areas, measurements or distances are approximate. Text, photographs and plans, where applicable, are for guidance only. Leggett and its representatives have not tested services, equipment or facilities and cannot guarantee the same.

Particulars for off-plan purchases are intended as a guide only. Final finishes to the property may vary. Purchasers are advised to engage a solicitor to check the plans and specifications as laid out in their purchase contract with the developer.



## DESCRIPTION

Showcasing today this quirky chocolate box country cottage, nestled in a tranquille hamlet in the Creuse. This period cottage oozes character and charm from a bygone era, a turnkey property with everything to set you up in your new home.

Lots of original features, this cottage is deceptively large and was previously successfully run as a B&B

As you enter into a spacious entrance hall, there is access into a good sized sitting room with French doors leading into the office/bedroom. The sitting room has a wood burner which feeds radiators located on the ground and first floor on one side of the cottage. Return into the entrance and access to a Utility room/laundry with a wc. Access to a separate kitchen/dining room with a wood burning range which feeds radiators located on the ground, first and second floors to the opposite side of the cottage. French windows leading into the country cottage garden and terrace with pool.

Return to entrance with a wide staircase leading to the 1st floor landing area boasting 2 large bedrooms one with an en suite and a separate family bathroom. Stairs to loft and 3 bedrooms with a shower, wash hand basin and separate toilet.

The cottage is double glazing throughout, and has full central heating provided by wood burners. A new fosse was installed 3 years ago.

As you meander around the manicured country cottage garden, there are various seating...

## LOCAL TAXES

**Taxe foncière: 393 EUR**

**Taxe habitation: EUR**

## NOTES