

Impressive and exceptional, Renovated Barn Conversion. Highest level of works, stunning Views. Wow Factor !



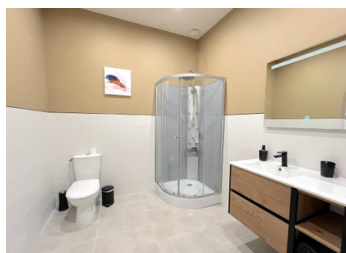
INFORMATION

Town:	Crevant
Department:	Indre
Bed:	4
Bath:	3
Floor:	180 m2
Plot Size:	3989 m2

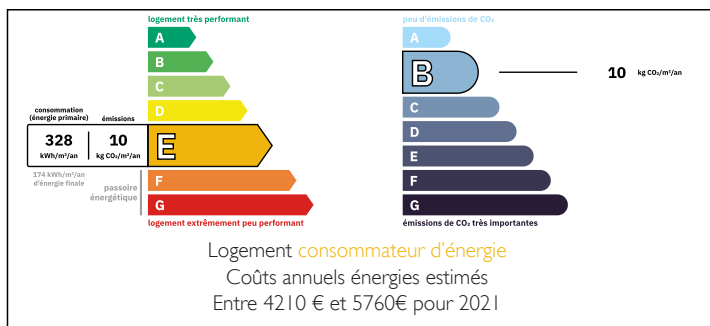
IN BRIEF

Close to the historic village of Crevant which sits on the trail of the Knights Hospitaller, with its medieval church and Templar hospital (now private residence) where pilgrims were treated on their way to Crusade.

Located in the beautiful, natural region of "Boischaut Sud" with unspoiled countryside, pretty hamlets and villages, and rural markets, the property has easy access to the larger towns of Aigurande with its farmers' market on Friday and the medieval town of La Châtre, which has a historic centre of town, with cobbled streets and wooden houses. A larger Saturday market, and boutique shops, bars and restaurants, offers all usual amenities including larger supermarkets and shopping centres.

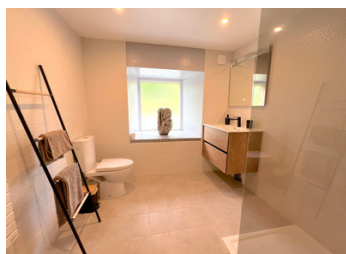


ENERGY - DPE



NB. Quoted prices relate to euro transactions. Fluctuations in exchange rates are not the responsibility of the agency or those representing it. The agency and its representatives are not authorised to make or give guarantees relating to the property. These particulars do not form part of any contract but are to be taken as a general representation of the property. Any areas, measurements or distances are approximate. Text, photographs and plans, where applicable, are for guidance only. Leggett and its representatives have not tested services, equipment or facilities and cannot guarantee the same.

Particulars for off-plan purchases are intended as a guide only. Final finishes to the property may vary. Purchasers are advised to engage a solicitor to check the plans and specifications as laid out in their purchase contract with the developer.



DESCRIPTION

A perfect property of exceptional high specification, with contemporary living in a sympathetically, yet modern barn conversion with new Kitchen, fixtures and fittings. It is a perfect property ready to move into.

The open-plan living area, offers comfort from the modern wood burner, a light and bright environment from the double aspect entrances, and authenticity with the exposed granite walls and oak beams.

The modern, larger than average kitchen, has lots of storage, is neutral in decor, and has room for a large dining area to one side.

The Master Bedroom, with its solarium terrace, offering beautiful views of the protected country park and woodland beyond, also has a modern shower room with WC.

To the other side of the property, on the mezzanine overlooking the lounge, two double bedrooms with an independent bathroom in between, makes up the 3rd bathroom.

The property has been developed, with the thought that a new owner may wish to have an income from a holiday let, so there is the possibility that the second kitchen with wood burner, beautiful shower room and WC and double bedroom on the ground floor, with separate access, could be used as a rental.

The more modern features include, a system for five on-line smart TV's, one in each bedroom and one in the lounge, all lighting is LCD keeping energy costs down to a minimum, totally double-glazed and insulated.

A brand new sanitary system (fosse septique) was installed in October 2023.

Extractor units run through both...

LOCAL TAXES

Taxe habitation: EUR

NOTES