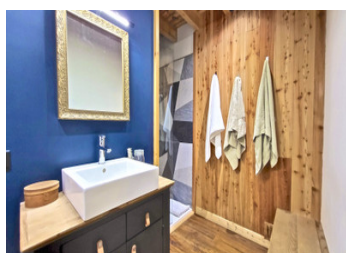
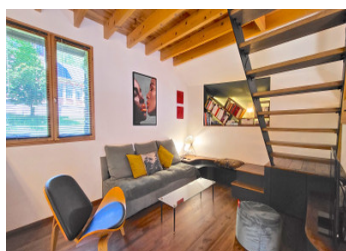
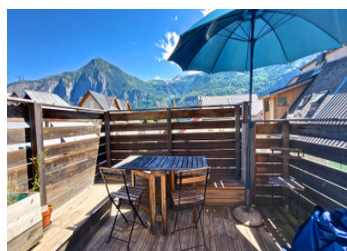
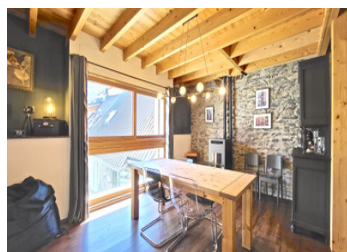


Beautiful renovation of traditional stone Townhouse with roof terrace and spacious vaulted garage.



INFORMATION

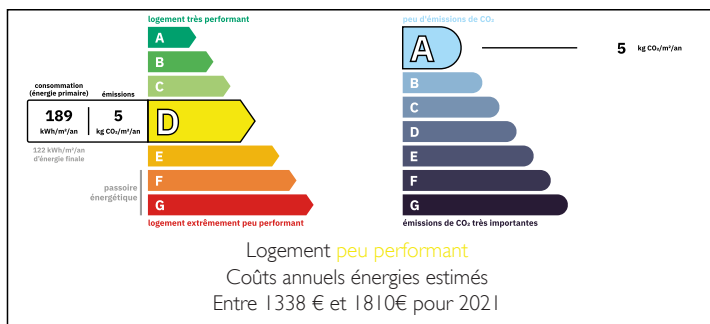
Town:	Le Bourg-d'Oisans
Department:	Isère
Bed:	3
Bath:	1
Floor:	140 m2
Plot Size:	140 m2



IN BRIEF

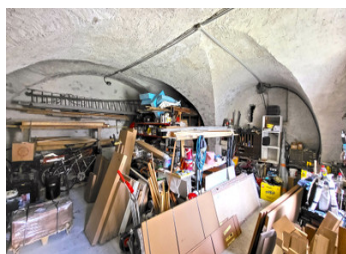
This traditional stone townhouse has been meticulously renovated since it was first purchased by the current owners. The main house offers a generous living space of 140 m² that has been very tastefully designed. The ground floor of the property consists of traditional stone vaulted cellar (58m²) which currently functions as a garage / workshop. This would make the perfect atelier for a local artisan or small business person requiring a large storage space for equipment and materials or for overwintering that precious vintage motor car !! Beautiful properties like this a rare to the market. The renovation has been meticulously carried out with every detail being designed to offer the maximum of home comfort.

ENERGY - DPE



NB. Quoted prices relate to euro transactions. Fluctuations in exchange rates are not the responsibility of the agency or those representing it. The agency and its representatives are not authorised to make or give guarantees relating to the property. These particulars do not form part of any contract but are to be taken as a general representation of the property. Any areas, measurements or distances are approximate. Text, photographs and plans, where applicable, are for guidance only. Leggett and its representatives have not tested services, equipment or facilities and cannot guarantee the same.

Particulars for off-plan purchases are intended as a guide only. Final finishes to the property may vary. Purchasers are advised to engage a solicitor to check the plans and specifications as laid out in their purchase contract with the developer.



LOCAL TAXES

Taxe foncière: 1346 EUR

Taxe habitation: EUR

NOTES

DESCRIPTION

The main access to the property is on the first floor via a bespoke steel and wood staircase that has been enclosed in the stone tower to the exterior. On this level we find the entrance hallway, two comfortable bedrooms, a tastefully designed modern bathroom and a separate wc.

A lovely wooden staircase leads us up to the second floor where we enter a vast and very modern open plan living space with wooden beams and stone features bathed in natural light. The large windows ensure a bright and spacious feel to the room where each of the four corners are configured as follows: a modern fully equipped kitchen, a dining area with pellet burner, a lounge area and finally the exit on to the roof terrace with fantastic views towards the famous TDF road climb to Alpe d'Huez. This fantastic roof terrace offers a quiet private outdoor space at any time of the year but especially in the summer for drinks and BBQ's. The heating is provided by the pellet stove with additional electric inertia radiators. The floors are solid parquet.

From the lounge corner an open staircase leads to the upper floor where we find the master bedroom and an open plan office area, ideal for those working from home as the property is also fully connected to the Fibre optic network. This floor conveniently has its own wc.

When the property was renovated, it received a full roof replacement. The...