

NEW this 6 bedroom chalet in La Tania, Courchevel has direct access to the piste and is close to the village



INFORMATION

Town:	Courchevel
Department:	Savoie
Bed:	6
Bath:	4
Floor:	119 m2
Plot Size:	753 m2

IN BRIEF

This fantastic 6 bedroom ski chalet is located in a quiet area of La Tania, Courchevel, 3 valleys on a 753m2 plot of land.

On the ground floor an entrance hall leads to an open plan living area with kitchen, dining and sitting room areas plus a cosy TV lounging space and a large balcony / terrace.

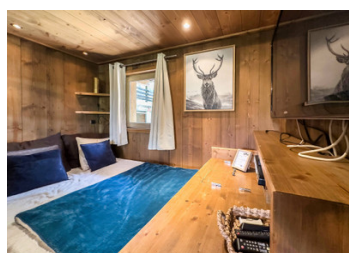
On the lower level is an ensuite double bedroom, laundry, hammam and ski room.

The 1st floor comprises 3 bedrooms, and 2 bathrooms, one master with shower room, and one double and a bunk bed room sharing a 2nd shower room and a balcony with views over the village.

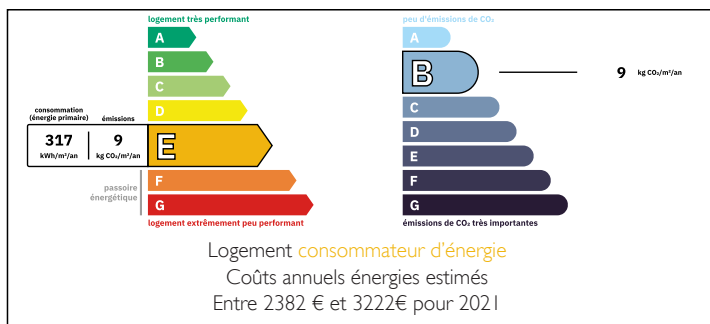
The second floor houses 2 double bedroom in the eves, a bathroom and balconies offering panoramic views.

A separate garage, plus a car port and outdoor parking gives parking for 6-7 cars.

La Tania is a ski...

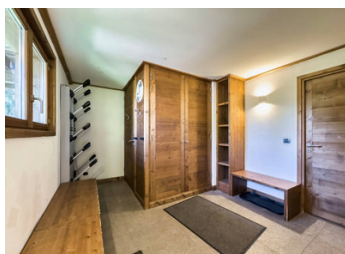
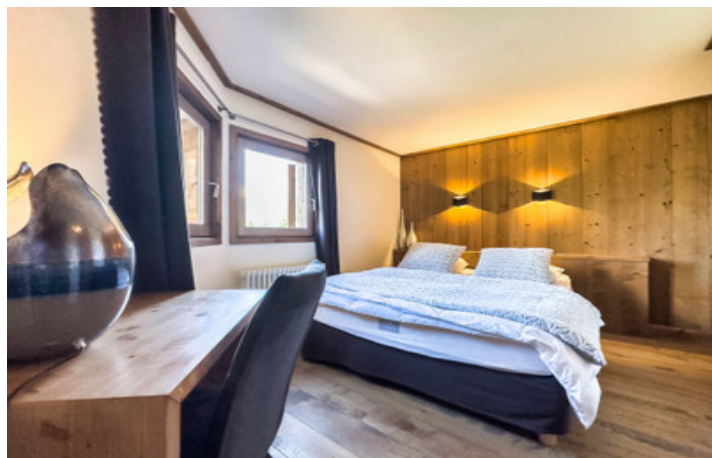


ENERGY - DPE



NB. Quoted prices relate to euro transactions. Fluctuations in exchange rates are not the responsibility of the agency or those representing it. The agency and its representatives are not authorised to make or give guarantees relating to the property. These particulars do not form part of any contract but are to be taken as a general representation of the property. Any areas, measurements or distances are approximate. Text, photographs and plans, where applicable, are for guidance only. Leggett and its representatives have not tested services, equipment or facilities and cannot guarantee the same.

Particulars for off-plan purchases are intended as a guide only. Final finishes to the property may vary. Purchasers are advised to engage a solicitor to check the plans and specifications as laid out in their purchase contract with the developer.



LOCAL TAXES

Taxe foncière: 1780 EUR

Taxe habitation: EUR

NOTES

DESCRIPTION

This fantastic 6 bedroom ski chalet is located in a quiet area of La Tania, Courchevel, 3 valleys on a 753m2 plot of land.

On the ground floor an entrance hall leads to an open plan living area with kitchen, dining and sitting room areas plus a cosy TV lounging space and a large balcony / terrace.

On the lower level is an ensuite double bedroom, laundry, hammam and ski room.

The 1st floor comprises 3 bedrooms, and 2 bathrooms, one master with shower room, and one double and a bunk bed room sharing a 2nd shower room and a balcony with views over the village.

The second floor houses 2 double bedroom in the eaves, a bathroom and balconies offering panoramic views.

A separate garage plus a car port and outdoor parking gives parking for 6-7 cars.

La Tania is a ski village in the heart of the 3 valleys with super access to the whole area (2 ski lifts to Courchevel or Meribel) and offers a good range of shops, bars and restaurants in both summer and winter.

Information about risks to which this property is exposed is available on the Géorisques website : <https://www.georisques.gouv.fr>