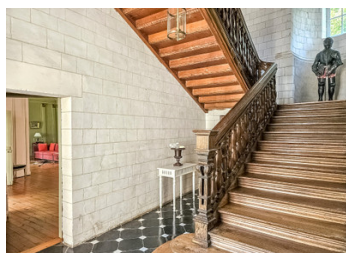
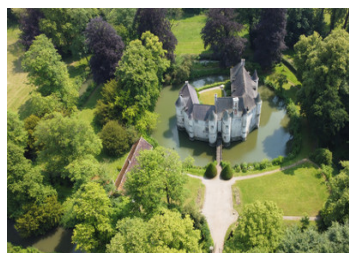


Historic Medieval Château with Moat, Drawbridge and Unique Cricket Heritage - 2 Hours from Paris CDG Airport



INFORMATION

Town:	Estrée-Blanche
Department:	Pas-de-Calais
Bed:	5
Bath:	5
Floor:	393 m2
Plot Size:	65663 m2



IN BRIEF

This elegant 15th-century white stone château, by the site of cricket's earliest recorded match in 1478, lies just 2 hours from Paris Charles de Gaulle Airport.

In excellent condition, the estate spans 16.2 acres of parkland featuring a double moat, working drawbridge, and turreted towers. It retains its historic charm with original features including fine tiled and wooden floors, carved wooden doors, working stone and marble fireplaces, oak-beamed ceilings, and ornate plasterwork.

Offering approximately 400m² of living space, the ground floor comprises a grand entrance hall, library, and chapel. A majestic staircase leads to 5/6 bedrooms and 5 bathrooms. The secluded grounds, once witness to medieval cricket history, include two outbuildings ideal for conversion to gîtes (115m² and 173m²).

Equipped with modern amenities, this exceptional unique property would be ideal as a private secure

ENERGY - DPE

DPE not required.

NB. Quoted prices relate to euro transactions. Fluctuations in exchange rates are not the responsibility of the agency or those representing it. The agency and its representatives are not authorised to make or give guarantees relating to the property. These particulars do not form part of any contract but are to be taken as a general representation of the property. Any areas, measurements or distances are approximate. Text, photographs and plans, where applicable, are for guidance only. Leggett and its representatives have not tested services, equipment or facilities and cannot guarantee the same.

Particulars for off-plan purchases are intended as a guide only. Final finishes to the property may vary. Purchasers are advised to engage a solicitor to check the plans and specifications as laid out in their purchase contract with the developer.



DESCRIPTION

This exceptional property, owned by only two families since 1799, holds a unique place in both architectural and sporting history. As the home of one of the teams that played in the first documented cricket match in 1478, the château is not only a remarkable example of medieval architecture but also a significant landmark in sporting heritage.

Nestled in a picturesque valley, this Historic Monument stands in excellent structural condition, benefiting from substantial aid to preserve its splendor for future generations. The modest Property Tax is only €2,652 p.a.

The château's original circular design, created for defense against marauding soldiers, now creates a stunning architectural feature. Surrounded by a double moat inhabited by large fish and black swans, the property is accessed via a working drawbridge. The circular layout features an inner courtyard adorned with towers, turrets, and buttresses. The elegant white walls are constructed from clunch (hard chalk), a material used since Roman times that lends the castle its timeless appearance. A south-facing terrace overlooking the moat, added in the 18th century, offers spectacular views. Historic defensive features remain visible in the arrow ports of the north tower.

The ground floor provides 198m² of living space, featuring a Napoleon III-style drawing and dining room, main reception room, two kitchens, library/study, and original chapel. Two staircases lead to the upper floors, housing six bedrooms and four luxurious bathrooms. Original features include herringbone parquet flooring, intricate ceiling roses, and period fireplaces. The attic offers potential for additional...

LOCAL TAXES

Taxe foncière: 2652 EUR

Taxe habitation: EUR

NOTES