

Charming village house

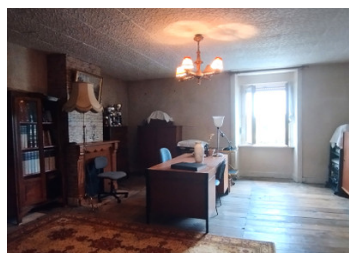


INFORMATION

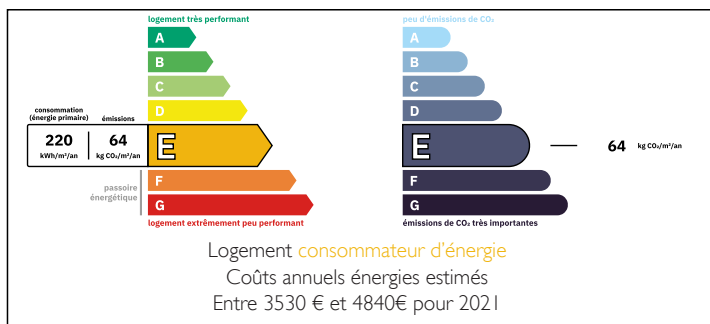
| | |
|-------------|--------------|
| Town: | Châlus |
| Department: | Haute-Vienne |
| Bed: | 5 |
| Bath: | 2 |
| Floor: | 207 m2 |
| Plot Size: | 1570 m2 |

IN BRIEF

A beautiful traditional stone house with barn and hangar



ENERGY - DPE



NB. Quoted prices relate to euro transactions. Fluctuations in exchange rates are not the responsibility of the agency or those representing it. The agency and its representatives are not authorised to make or give guarantees relating to the property. These particulars do not form part of any contract but are to be taken as a general representation of the property. Any areas, measurements or distances are approximate. Text, photographs and plans, where applicable, are for guidance only. Leggett and its representatives have not tested services, equipment or facilities and cannot guarantee the same.

Particulars for off-plan purchases are intended as a guide only. Final finishes to the property may vary. Purchasers are advised to engage a solicitor to check the plans and specifications as laid out in their purchase contract with the developer.



DESCRIPTION

This spacious village house is located at the entrance to the village of Chalus. The ground floor consists of an entrance hall, living room with open fire place, kitchen, bedroom, bathroom and WC. The first floor has four bedrooms, an office and a bathroom. There is an insulated attic and a cellar. Attached to the house, there is a barn divided into garage space, boiler room, kitchen and WC. At the rear of the barn, there is a bright conservatory. A large hangar completes the property.

Information about risks to which this property is exposed is available on the Géorisques website : <https://www.georisques.gouv.fr>

LOCAL TAXES

Taxe foncière: 2118 EUR

Taxe habitation: EUR

NOTES