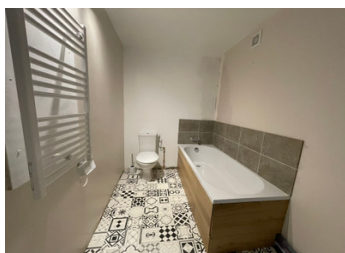


Sorry, offer accepted. Detached property in peaceful location



INFORMATION

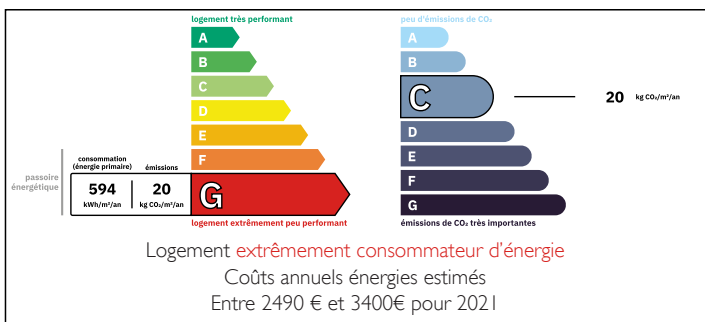
Town:	Crédin
Department:	Morbihan
Bed:	4
Bath:	2
Floor:	121 m2
Plot Size:	5560 m2



IN BRIEF

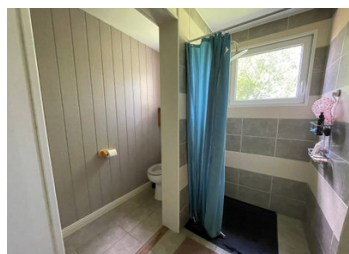
Situated in a quiet spot, with easy access to Rohan and Credin this is a lovely 4 bedroomed property, priced for a quick sale. The current owner has renovated the property to a good standard. You could move straight in and develop the gite or leave it for storage/a man cave.

ENERGY - DPE



NB. Quoted prices relate to euro transactions. Fluctuations in exchange rates are not the responsibility of the agency or those representing it. The agency and its representatives are not authorised to make or give guarantees relating to the property. These particulars do not form part of any contract but are to be taken as a general representation of the property. Any areas, measurements or distances are approximate. Text, photographs and plans, where applicable, are for guidance only. Leggett and its representatives have not tested services, equipment or facilities and cannot guarantee the same.

Particulars for off-plan purchases are intended as a guide only. Final finishes to the property may vary. Purchasers are advised to engage a solicitor to check the plans and specifications as laid out in their purchase contract with the developer.



DESCRIPTION

There is plenty of parking in front of the property which is at the end of a quiet lane.

As you enter the property there is a hallway and to the left the open plan kitchen with breakfast bar and lounge (8.15 x 3.89)

Also on the ground floor are two bedrooms and a shower room with shower, WC, sink, tiled floor and heated towel rail.

Bedroom 1 (4.397 x 3.125)

Bedroom 2 (3.817 x 2.907)

Shower room (2.137 x 2.477)

Leading off the kitchen is a door leading to a laundry area and a staircase to the first floor.
(1.707 x 5.397)

There is also a separate door to the area that is currently used for storage but could be made into a gite with its separate front door.

This area has double glazed windows and currently a ladder to the first floor.

(7.486 x 5.678) ground floor (7.486 x 4.02) plus eaves.

Up the stairs from laundry area is bedroom 3 with ensuite bathroom

Bedroom 3 (3.857 x 4.337)

En suite bathroom with bath, sink, WC and heated towel rail.

Hallway (1.8 x 3.98)

Bedroom 4 (2.332 x 8.409) this room has recently been renovated and plastered, ready for the new owners

Patio doors lead from the lounge to the pretty garden with fruit trees and established plants plus a vegetable plot. Adjacent to the house is a garage and workshop (30m²)

LOCAL TAXES

Taxe habitation: EUR

NOTES