

Four bedroom house with outbuildings and enclosed garden of 2700 m



INFORMATION

Town:	Saint-Antoine-de-Breuilh
Department:	Dordogne
Bed:	4
Bath:	2
Floor:	165 m2
Plot Size:	2762 m2

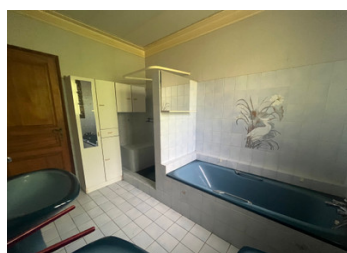
IN BRIEF

Located 3km from shops, this house built at the end of the 1980s and with approximately 160m² of living space is located in a quiet area, along a road with little traffic.

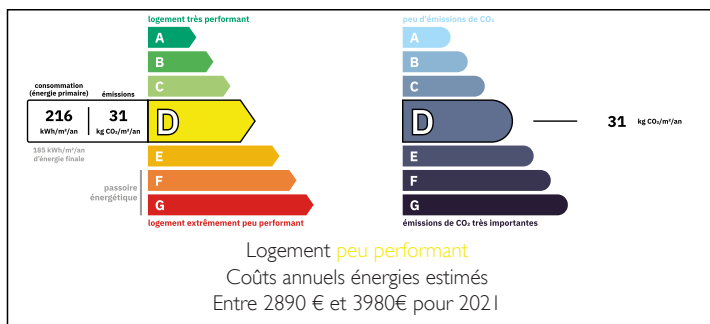
It consists of four bedrooms, a living/dining room, a kitchen, a bathroom, a toilet, a shower room, a storeroom with a cellar, a workshop and a utility room and a covered terrace.

A 65 m² outbuilding completes this property.

The house is located in the middle of its enclosed and wooded grounds.

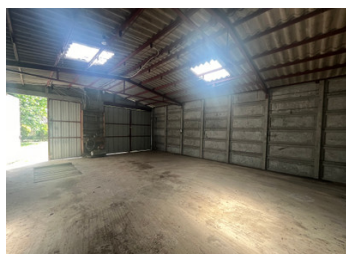


ENERGY - DPE



NB. Quoted prices relate to euro transactions. Fluctuations in exchange rates are not the responsibility of the agency or those representing it. The agency and its representatives are not authorised to make or give guarantees relating to the property. These particulars do not form part of any contract but are to be taken as a general representation of the property. Any areas, measurements or distances are approximate. Text, photographs and plans, where applicable, are for guidance only. Leggett and its representatives have not tested services, equipment or facilities and cannot guarantee the same.

Particulars for off-plan purchases are intended as a guide only. Final finishes to the property may vary. Purchasers are advised to engage a solicitor to check the plans and specifications as laid out in their purchase contract with the developer.



DESCRIPTION

Gas heating

Individual sanitation

Description

Entrance: 7m²

Clearance: 14 m²

Kitchen: 12.80m²

back kitchen: 23.5m²

Dining room: 47.50m²

bedroom: 10.5m²

bedroom: 14.50m²

room: 13m²

bedroom: 13.50 m²

bathroom: 7.25m²

bathroom: 2.70m²

WC: 2.75m²

laundry room: 7.50m²

cellar: 34 m²

workshop/boiler room: 21.50m²

Garage: 65m²

LOCAL TAXES

Taxe habitation: EUR

Information about risks to which this property is exposed is available on the Géorisques website : <https://www.georisques.gouv.fr>

NOTES