

Magnificent duplex flat in the Grandchamp estate, at the gateway to the capital.



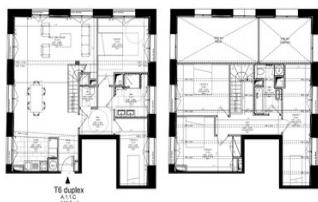
## INFORMATION

Town:	Le Pecq
Department:	Yvelines
Bed:	5
Bath:	2
Floor:	141 m2
Plot Size:	0 m2



## IN BRIEF

We invite you to become part of history by purchasing this exceptional and unique flat. Let yourself be seduced by the completely refurbished flats of the Château de Grandchamp.



## ENERGY - DPE

DPE not required.

NB. Quoted prices relate to euro transactions. Fluctuations in exchange rates are not the responsibility of the agency or those representing it. The agency and its representatives are not authorised to make or give guarantees relating to the property. These particulars do not form part of any contract but are to be taken as a general representation of the property. Any areas, measurements or distances are approximate. Text, photographs and plans, where applicable, are for guidance only. Leggett and its representatives have not tested services, equipment or facilities and cannot guarantee the same.

Particulars for off-plan purchases are intended as a guide only. Final finishes to the property may vary. Purchasers are advised to engage a solicitor to check the plans and specifications as laid out in their purchase contract with the developer.

## DESCRIPTION

At the heart of its wooded grounds stands the Château de Grandchamp, a building that invites you to travel just a short distance from the town. Renovated and refurbished by one of our partners, this estate is now waiting for you

-----

Information about risks to which this property is exposed is available on the Géorisques website : <https://www.georisques.gouv.fr>

## LOCAL TAXES

Taxe habitation: EUR

## NOTES