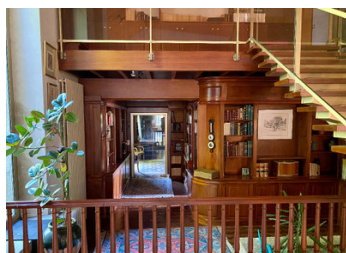
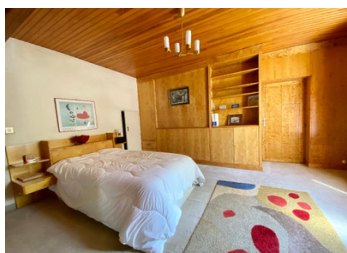
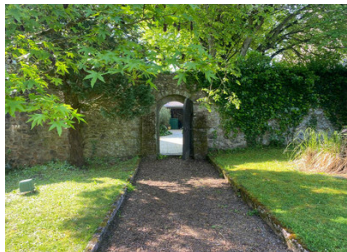


Stunning traditional maison de maitre close to the sea and amenities. 7 bedrooms. Heated indoor pool.



## INFORMATION

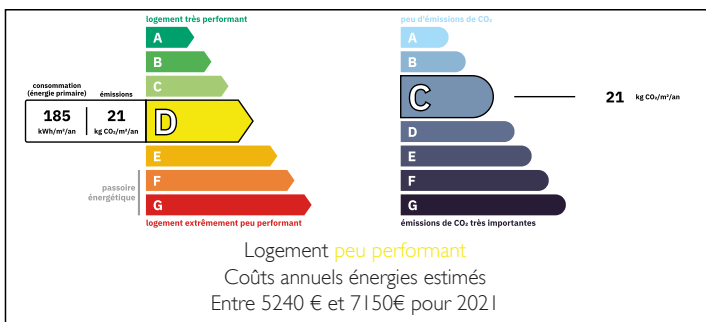
Town:	Blainville-sur-Mer
Department:	Manche
Bed:	7
Bath:	4
Floor:	400 m2
Plot Size:	10000 m2



## IN BRIEF

Vast residence steeped in art and history, 420 m2 with 13 rooms, including 7 bedrooms and 4 bathrooms. 1 heated indoor swimming pool, 1 hectare of wooded grounds. Dressed stone facades. Aerothermal heat pump.

## ENERGY - DPE



NB. Quoted prices relate to euro transactions. Fluctuations in exchange rates are not the responsibility of the agency or those representing it. The agency and its representatives are not authorised to make or give guarantees relating to the property. These particulars do not form part of any contract but are to be taken as a general representation of the property. Any areas, measurements or distances are approximate. Text, photographs and plans, where applicable, are for guidance only. Leggett and its representatives have not tested services, equipment or facilities and cannot guarantee the same.

Particulars for off-plan purchases are intended as a guide only. Final finishes to the property may vary. Purchasers are advised to engage a solicitor to check the plans and specifications as laid out in their purchase contract with the developer.



## LOCAL TAXES

Taxe habitation: EUR

## NOTES

## DESCRIPTION

This L-shaped house is a delightful blend of tradition and originality.

On the ground floor there are two large lounges of 48 and 51m<sup>2</sup> respectively. One in Norman style with exposed beams and granite fireplace, the other in mahogany inspired by English 19th century, with its chesterfield sofa, large bookcase and fireplace.

A modern 28m<sup>2</sup> living-room or TV room.

A yacht cabin-style bar, a veranda with barbecue and fireplace, a fitted kitchen with an adjoining dining room, a utility room and a 40 m<sup>2</sup> cathedral gallery hall.

A shower room and two toilets..

Upstairs, seven bedrooms, including a master suite with bathroom and dressing room, two further bathrooms and two shower rooms with toilets.

A convertible attic.

Outside, you will find a small chapel converted into a workshop with a bay window overlooking the parklands, 3 garages and two outbuildings. Heated indoor swimming pool.

The property has one hectare of wooded parklands where roe deer can sometimes be seen.

- Total surface area: 446 m<sup>2</sup>

- Living space: 420 m<sup>2</sup>

- Land area: 10,079 m<sup>2</sup>

Other

- garage : 3 places

- Heating : Individual heat pump aerothermal + electric

- Hot water : Boiler

- Fireplaces : 4

- Veranda with fireplace for barbecue

- Double glazing, plenty of storage space

Dimensions:

□ Old wing