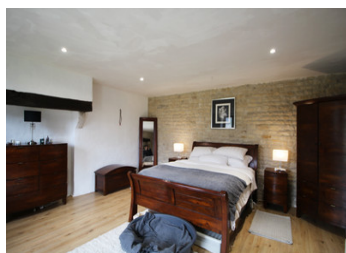


Idyllic stone country home in a quiet setting, with two acres of land and a large barn.



INFORMATION

Town:	Valdelaume
Department:	Deux-Sèvres
Bed:	2
Bath:	1
Floor:	115 m2
Plot Size:	9673 m2



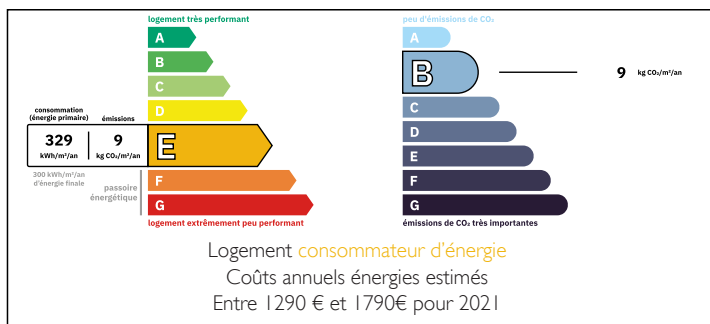
IN BRIEF

Lovely stone country retreat that has been recently renovated whilst maintaining its character. The house not only boasts stone walls and travertine floors, it also has a new roof, double glazed windows, has been rewired and there's a recently installed septic tank.

Currently all the living space is on one floor, but there's a possibility to create more rooms in the attic or extend into the barn.

The outbuilding has got several boxes/stables that could be used for animals or storage. The barn itself measures approximately 200 m² and would easily house several camping cars.

ENERGY - DPE



NB. Quoted prices relate to euro transactions. Fluctuations in exchange rates are not the responsibility of the agency or those representing it. The agency and its representatives are not authorised to make or give guarantees relating to the property. These particulars do not form part of any contract but are to be taken as a general representation of the property. Any areas, measurements or distances are approximate. Text, photographs and plans, where applicable, are for guidance only. Leggett and its representatives have not tested services, equipment or facilities and cannot guarantee the same.

Particulars for off-plan purchases are intended as a guide only. Final finishes to the property may vary. Purchasers are advised to engage a solicitor to check the plans and specifications as laid out in their purchase contract with the developer.



LOCAL TAXES

Taxe habitation: EUR

NOTES

DESCRIPTION

The property in further detail :

MAIN HOME :

Kitchen/diner: 30,5 m²

Living room: 20m²

Bedroom: 27 m²

Bedroom: 25,5m²

Corridor: 5m²

Shower room with toilet: 7,5m²

OUTBUILDINGS :

7 boxes for Horses

Barn: 200 m²

Hangar: 55m²

LAND

There's a graveled drive, a front garden and a large paddock.

There's also a well. Total Garden size: 9673

Only 5 minutes from the village Chef Boutonne, with all amenities and markets.

This property presents a rare opportunity to embrace a lifestyle of luxury and leisure. Whether you're seeking a commercial business, campsite, a place to pursue your passion for horses, or simply a place to call home, this exquisite property offers the ultimate canvas for realizing your dreams.

Welcome to the country – Welcome home.

Information about risks to which this property is exposed is available on the Géorisques website : <https://www.georisques.gouv.fr>