

Spacious 5-bedroom home with breathtaking countryside views and potential to expand or create rental income.



INFORMATION

Town:	Spézet
Department:	Finistère
Bed:	5
Bath:	2
Floor:	164 m2
Plot Size:	3752 m2



IN BRIEF

Spacious 5-Bedroom Home with Breathtaking Countryside Views and potential to expand or create rental income.

Set within a stunning mature garden, this bright and spacious 5-bedroom home offers panoramic countryside views.

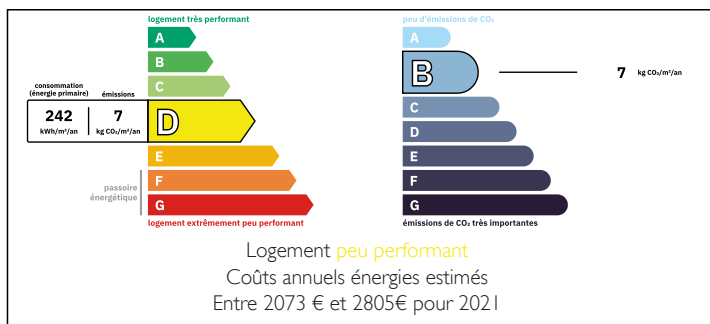
Main House -

- Modern, fully equipped kitchen
- Expansive 30m² living room with panoramic windows leading to a terrace and garden
- Five generously sized bedrooms

Extensive Basement -

- Two workshops
- Garage
- Additional kitchen
- Shower room
- Wine cellar

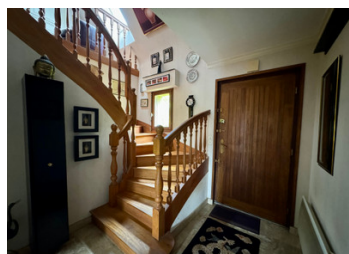
ENERGY - DPE



NB. Quoted prices relate to euro transactions. Fluctuations in exchange rates are not the responsibility of the agency or those representing it. The agency and its representatives are not authorised to make or give guarantees relating to the property. These particulars do not form part of any contract but are to be taken as a general representation of the property. Any areas, measurements or distances are approximate. Text, photographs and plans, where applicable, are for guidance only. Leggett and its representatives have not tested services, equipment or facilities and cannot guarantee the same.

Particulars for off-plan purchases are intended as a guide only. Final finishes to the property may vary. Purchasers are advised to engage a solicitor to check the plans and specifications as laid out in their purchase contract with the developer.

countryside retreat with possibilities for expansion or rental income



DESCRIPTION

Ground floor - 89m²

Kitchen - 22m²

Living room - 32m²

Hallway - 10m²

Bedroom 1 - 15m²

Shower room - 4m²

Office - 5m²

W.C. - 2m²

1st Floor - 62m²

Bedroom 2 - 8.6m²

Bedroom 3 - 11m²

Bedroom 4 - 18m²

Bedroom 5 - 7m²

Bathroom - 7m²

W.C. - 1.4m²

Landing - 7m²

Basement - Total - 61m²

Kitchen - 13m²

Garage - 22m²

Workshop 1 - 16m²

Workshop 2 - 20m²

Cellar - 8m²

Boiler room - 13.4m²

Landing - 3.8m²

Information about risks to which this property is exposed is available on the Géorisques website :

<https://www.georisques.gouv.fr>

LOCAL TAXES

Taxe foncière: 9210 EUR

Taxe habitation: EUR

NOTES