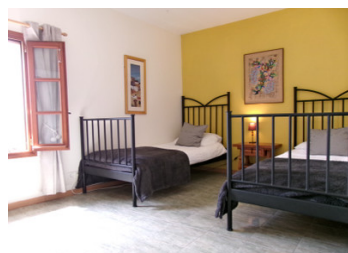


Absolutely stunning countryside views from this 2 bedroom detached cottage , ready to move in. A MUST SEE!



INFORMATION

Town:	Chatain
Department:	Vienne
Bed:	2
Bath:	3
Floor:	95.03 m2
Plot Size:	1020 m2

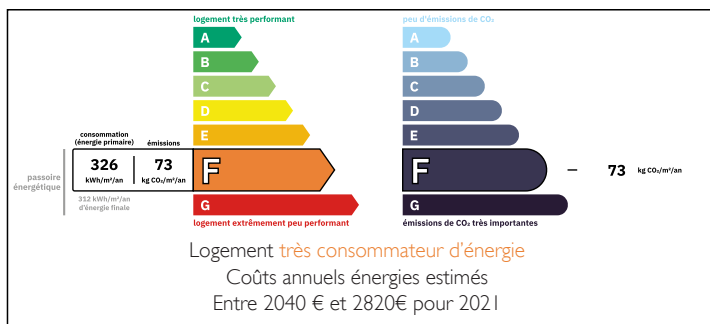


IN BRIEF

This detached stone country cottage has magnificent views over the surrounding countryside from nearly every room. It is ideal for someone who wants to move straight in. Early viewing is recommended to avoid disappointment.....

The property boasts double glazing, fuel central heating, a bread oven, outbuildings, outdoor terraces, hangar and space for a swimming pool and excellent views from the garden.

ENERGY - DPE



NB. Quoted prices relate to euro transactions. Fluctuations in exchange rates are not the responsibility of the agency or those representing it. The agency and its representatives are not authorised to make or give guarantees relating to the property. These particulars do not form part of any contract but are to be taken as a general representation of the property. Any areas, measurements or distances are approximate. Text, photographs and plans, where applicable, are for guidance only. Leggett and its representatives have not tested services, equipment or facilities and cannot guarantee the same.

Particulars for off-plan purchases are intended as a guide only. Final finishes to the property may vary. Purchasers are advised to engage a solicitor to check the plans and specifications as laid out in their purchase contract with the developer.



LOCAL TAXES

Taxe habitation: EUR

NOTES

DESCRIPTION

On arrival at the property there is a designated parking area with space for 2 cars.

Traditional stone steps lead you to the entrance hallway, which includes a ground floor cloakroom. Stepping out of the cloakroom you enter the open plan kitchen with a range of country style pine cupboards, attractive tiled splashback and under counter dishwasher. There's space for a cooker and fridge-freezer, as well as a dining table from which you can enjoy the stunning views. A door leads to the terrace and garden.

From the kitchen, a small step leads to the lounge and dining room. This room is full of character with its traditional oak beams, tiled floor and beautiful stone fireplace with wood-burning insert. Here, too, you can enjoy the views from the French windows leading out onto the terrace.

Stairs lead to the first-floor bedrooms, separate wc and bathroom.

The master bedroom offers stunning views from the rear window. It has oak beams and oak flooring, ample storage space and separate access from the road.

The second bedroom offers the same stunning views to the rear. The floor is ceramic tiles and there is ample space for furniture.

The bathroom has semi-tiled walls, a washbasin, WC and shower.

Separate WC.

To the outside, there is an outbuilding which houses the central heating boiler and there is space for washing/drying machines. There is another room which could be converted into a workshop/guest suite.