

Cheap town house with terrace, bargain

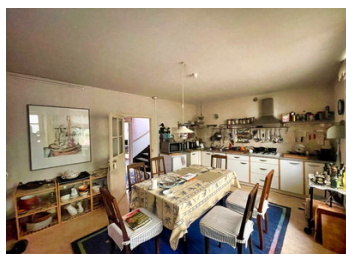


INFORMATION

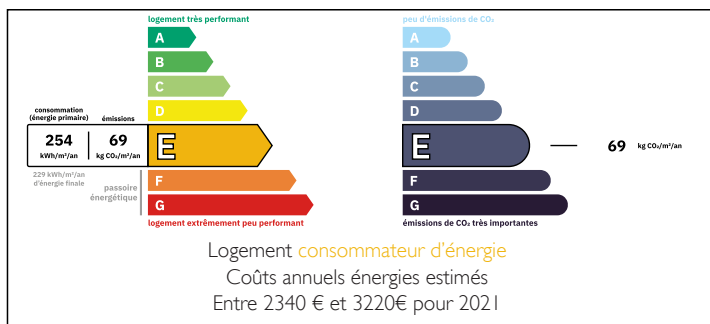
Town:	Nontron
Department:	Dordogne
Bed:	3
Bath:	1
Floor:	120 m2
Plot Size:	17 m2

IN BRIEF

Very inexpensive town house. Ideal first purchase. Roof to be done but it's not raining yet. It's a great place to live, because from the large kitchen you can eat on the covered terrace at the back of the house. Vaulted wine cellar .6 rooms 120 m2 habitable

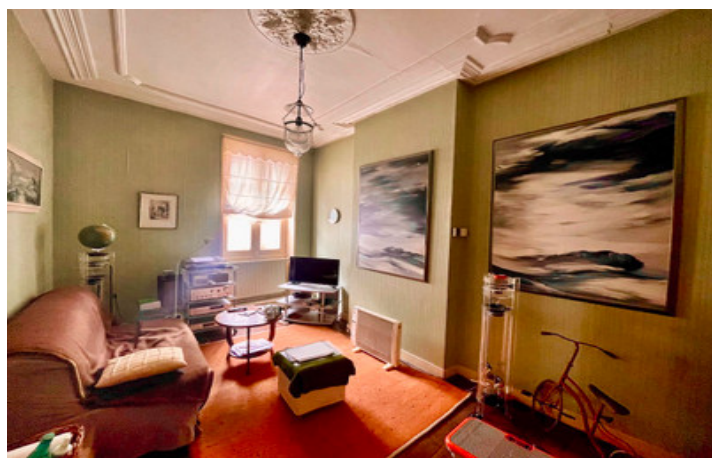


ENERGY - DPE



NB. Quoted prices relate to euro transactions. Fluctuations in exchange rates are not the responsibility of the agency or those representing it. The agency and its representatives are not authorised to make or give guarantees relating to the property. These particulars do not form part of any contract but are to be taken as a general representation of the property. Any areas, measurements or distances are approximate. Text, photographs and plans, where applicable, are for guidance only. Leggett and its representatives have not tested services, equipment or facilities and cannot guarantee the same.

Particulars for off-plan purchases are intended as a guide only. Final finishes to the property may vary. Purchasers are advised to engage a solicitor to check the plans and specifications as laid out in their purchase contract with the developer.



LOCAL TAXES

Taxe habitation: EUR

NOTES

DESCRIPTION

Entrance hallway 5.44 m2
 Entrance hallway 6.78 m2
 WC 1,65 m2
 Vaulted cellar 14 m2
 Boiler room 20 m2
 First floor
 Kitchen 17.6 m2
 Covered terrace 18 m2
 Small sitting room 12.9 m2
 Small sitting room 12.4 m2
 Landing 4,4 m2

2 Floors
 Study 14.4 m2
 Bedroom 13.5 m2
 Bathroom 8.5 m2
 Bedroom 10.8 m2
 Landing 8.4 m2
 Entrance hallway 5.44 m2
 Entrance hallway 6.78 m2
 WC 1,65 m2
 Vaulted cellar 14 m2
 Boiler room 20 m2
 First floor
 Kitchen 17.6 m2
 Covered terrace 18 m2
 Small sitting room 12.9 m2
 Small sitting room 12.4 m2
 Landing 4,4 m2

2 Floors
 Study 14.4 m2
 Bedroom 13.5 m2
 Bathroom 8.5 m2
 Bedroom 10.8 m2
 Landing 8.4 m2

The urban area was probably already inhabited in the late Bronze Age around 1100 BC. The presence of the Romans is documented by a villa complex at nearby Nontronneau and by road remains at Poperdu and La Roderie de Bord. In the urban area itself, a Gallo-Roman castrum was also built on a