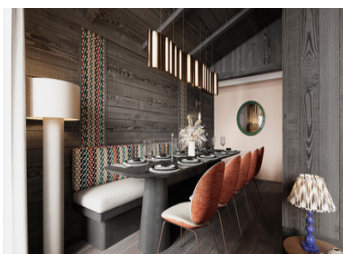


Off plan apartment with 4 bedroom + bunks, in sunny area in Courchevel with Spa, pool & 5\* hotel services



## ENERGY - DPE

DPE not required.

## INFORMATION

Town:	Courchevel
Department:	Savoie
Bed:	5
Bath:	4
Floor:	126 m2
Outside Space:	22 m2

## IN BRIEF

This apartment of a total space of 169m2 is a quality new construction offering a modern and authentic residence is in the heart of Courchevel Moriond, just 150 metres from the ski slopes and with stunning views.

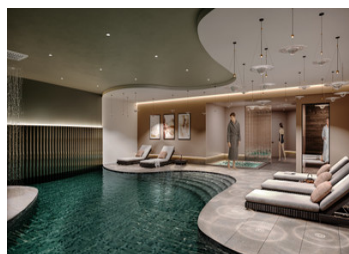
Make yourself comfortable in your mountain property, while enjoying the unique views of the surrounding mountains. The lodges offer the privacy of one's own apartment with high-end facilities, and also includes common living areas: reception and concierge service, wellness area with swimming pool, spa and treatment rooms, ski-room and ski-shop, restaurants and various shops... Everything has been designed to ensure the well-being and desires of everyone!

Financial incentives are offered on these properties with the possibilities of 20% VAT reclaim, decreased notaire fees and no local property tax for the first 2 years.

The rental service gives you the flexibility of freehold

NB. Quoted prices relate to euro transactions. Fluctuations in exchange rates are not the responsibility of the agency or those representing it. The agency and its representatives are not authorised to make or give guarantees relating to the property. These particulars do not form part of any contract but are to be taken as a general representation of the property. Any areas, measurements or distances are approximate. Text, photographs and plans, where applicable, are for guidance only. Leggett and its representatives have not tested services, equipment or facilities and cannot guarantee the same.

Particulars for off-plan purchases are intended as a guide only. Final finishes to the property may vary. Purchasers are advised to engage a solicitor to check the plans and specifications as laid out in their purchase contract with the developer.



## LOCAL TAXES

Taxe habitation: EUR

## NOTES

## DESCRIPTION

Luxury Lodges in Courchevel Moriond: Your Ultimate Alpine Retreat

Experience the pinnacle of alpine living with these exceptional lodges offering unparalleled convenience from the moment of purchase to the enjoyment of holidays, and the lucrative income generated from rentals.

Property Features:

Entrance 18,25m<sup>2</sup>  
Living room & Kitchen 39,05m<sup>2</sup>  
Bedroom 1 15,38m<sup>2</sup>  
Bedroom 2 12,95m<sup>2</sup>  
Bedroom 3 10,25m<sup>2</sup>  
Bedroom 4 6,00m<sup>2</sup>  
Cabin 4,65m<sup>2</sup>  
Bathroom 1 5,50m<sup>2</sup>  
Bathroom 2 2,95m<sup>2</sup>  
Bathroom 3 4,85m<sup>2</sup>  
Bathroom 4 4,75m<sup>2</sup>  
Wc 1,95m<sup>2</sup>  
Interior area 146,58m<sup>2</sup>  
Terrace & Balcony 22,91m<sup>2</sup>  
Total area 169,49m<sup>2</sup>

Prime Location: Situated in the highly sought-after Courchevel Moriond, known for its abundant sunshine and year-round appeal. Perfect for both winter skiing and summer adventures.

Convenient location: Enjoy effortless access to world-class skiing, village shops, and restaurants, right at your doorstep.

Amenities Galore: Revel in the extensive array of on-site amenities including a private swimming pool, rejuvenating spa, indulgent treatment rooms, ski room, ski shop, reception, concierge service, restaurant, and bar.

Panoramic Views: Each lodge boasts breathtaking views overlooking the iconic 1850 or the