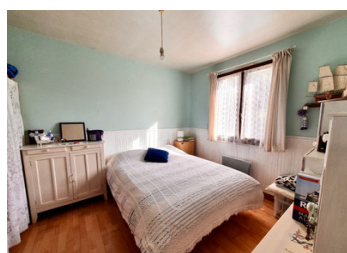
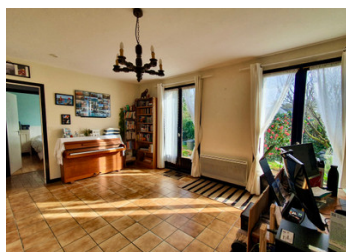
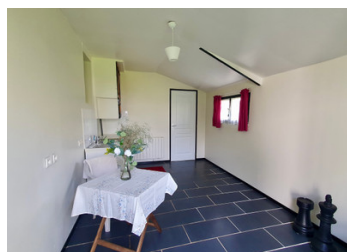


OFFER ACCEPTED. Bungalow in the South Brittany countryside. 3 beds, outbuildings, land & beach 30 mins.



INFORMATION

Town:	Saint-Dolay
Department:	Morbihan
Bed:	3
Bath:	1
Floor:	95 m2
Plot Size:	1628 m2



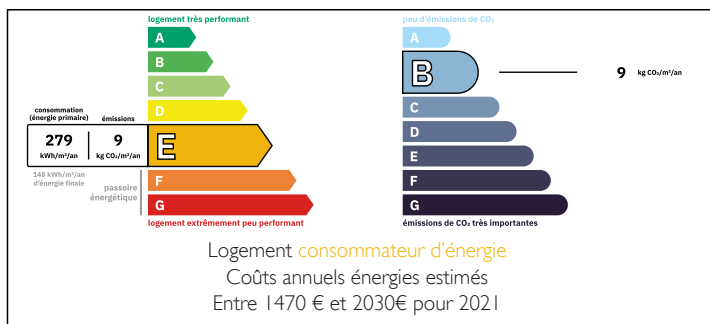
IN BRIEF

HOUSE

Very flexible living space as these rooms could have multiple functions. A bedroom could easily be used as an office or a with the removal of a non-supporting wall or two you could easily enlarge the lounge area or double the size of a bedroom and create huge open spaces. Current description below:

- Entrance hall
- Lounge-dining room with insert fireplace
- Fitted kitchen
- Bedroom 1 with cupboards
- Corridor
- Bathroom with WC
- Room with sink opening onto garden*
- Bedroom 2
- Bedroom 3

ENERGY - DPE



NB. Quoted prices relate to euro transactions. Fluctuations in exchange rates are not the responsibility of the agency or those representing it. The agency and its representatives are not authorised to make or give guarantees relating to the property. These particulars do not form part of any contract but are to be taken as a general representation of the property. Any areas, measurements or distances are approximate. Text, photographs and plans, where applicable, are for guidance only. Leggett and its representatives have not tested services, equipment or facilities and cannot guarantee the same.

Particulars for off-plan purchases are intended as a guide only. Final finishes to the property may vary. Purchasers are advised to engage a solicitor to check the plans and specifications as laid out in their purchase contract with the developer.



DESCRIPTION

EXTERNALS

A 1 628 m² plot with mature trees, a garden, parking area, large open hangar and former chicken shed for storage.

LOCATION

A peaceful hamlet in a countryside location.

4 km St Dolay

5 km Rieux

13 Redon (and its TGV station)

15 km La Roche Bernard, market town with artisanal quarter & harbour

30 km nearest beaches

57 km Vannes

70 km airport Nantes

70 km airport Rennes

150 km St Malo

430 km Paris

Information about risks to which this property is exposed is available on the G orisques website : <https://www.georisques.gouv.fr>

LOCAL TAXES

Taxe fonci re: 589 EUR

Taxe habitation: EUR

NOTES