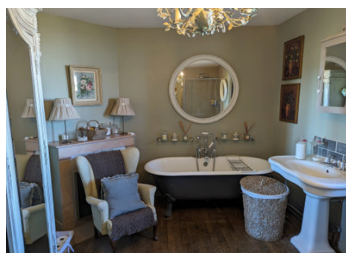


Glorious property with separate gîte and incredible views.



INFORMATION

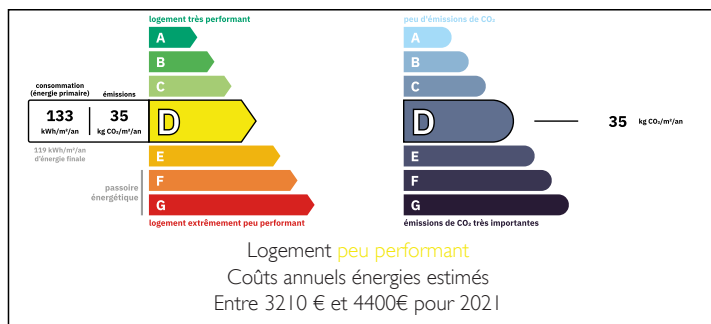
Town:	Villard
Department:	Creuse
Bed:	9
Bath:	6
Floor:	500 m2
Plot Size:	8770 m2



IN BRIEF

For lovers of gracious living, this wonderful ensemble of 2 elegant properties plus a guest wing, sits peacefully in the north-west of the Creuse. With 500 m² of habitable space, there are a total of 9 beautiful bedrooms, and the potential to extend further into numerous impressive outbuildings.

ENERGY - DPE



NB. Quoted prices relate to euro transactions. Fluctuations in exchange rates are not the responsibility of the agency or those representing it. The agency and its representatives are not authorised to make or give guarantees relating to the property. These particulars do not form part of any contract but are to be taken as a general representation of the property. Any areas, measurements or distances are approximate. Text, photographs and plans, where applicable, are for guidance only. Leggett and its representatives have not tested services, equipment or facilities and cannot guarantee the same.

Particulars for off-plan purchases are intended as a guide only. Final finishes to the property may vary. Purchasers are advised to engage a solicitor to check the plans and specifications as laid out in their purchase contract with the developer.



DESCRIPTION

The Main House – Approached through stately double gates, and dating back to the 17th Century, this breathtaking period property has a large farmhouse dining kitchen/sitting room with lovely chimney and woodburner, a stunning drawing room that leads to a covered terrace, a stylish dining room, a large utility room, and six magnificent bedrooms, two of which are ensuite and in their own guest wing.

The Second House – Standing outside the main gates, this self-contained home is fully renovated and full of charm. It has a chic kitchen, a spacious dining/sitting room with woodburner, and a bedroom and shower room downstairs. Upstairs there are two further bedrooms with enchanting beams, and a bathroom.

Outside – The attached land of over 2 acres consists of a gravelled frontage with plenty of parking, a dreamy terraced garden area at the back with hot tub, and a more informal area with water reservoir, two wells and a potager to the side. There are several large barns attached to the main house.

Shops and amenities are only a short trip away from this property, with Aigurande, Guéret and La Souterraine all within half an hour. The superb “Vallée des Peintres”, which has inspired painters such as Monet, and the picturesque village of La Celle-Dunoise, with its popular restaurant, are both just 15 minutes away, and the international airport at Limoges is one hour.

This type of quality property doesn't come on the market very often. With its high ceilings, interiors to...

LOCAL TAXES

Taxe foncière: 1318 EUR

Taxe habitation: EUR

NOTES