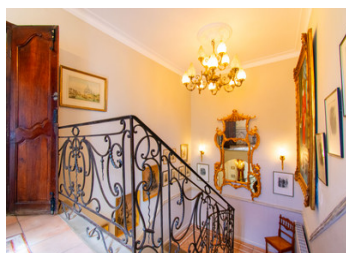
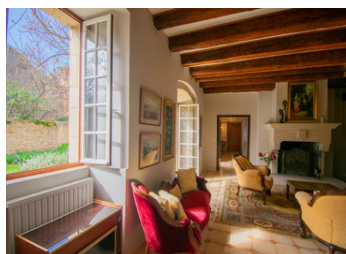
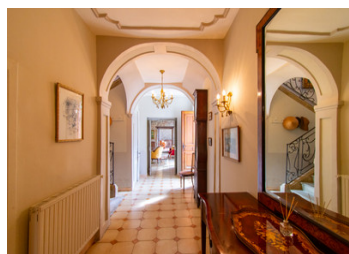


Exquisit stonehouse in the heart of the Medieval village of Alet-les-Bains, 5 beds, Garden, pool.



INFORMATION

Town:	Alet-les-Bains
Department:	Aude
Bed:	5
Bath:	2
Floor:	250 m2
Plot Size:	505 m2



IN BRIEF

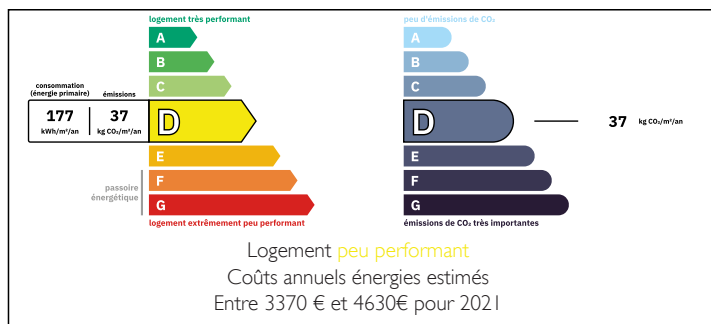
Drenched in historical character this is a magical property in side the walls of Alet-les-Bains a village with all aminaties.

The property boasts authentic 19 century stone walls, adding to its charm and character.

With its spacious layout and luxurious decoration, this house offers the perfect blend of elegance and comfort.

The ground floor is tastfully tiled through out

ENERGY - DPE



NB. Quoted prices relate to euro transactions. Fluctuations in exchange rates are not the responsibility of the agency or those representing it. The agency and its representatives are not authorised to make or give guarantees relating to the property. These particulars do not form part of any contract but are to be taken as a general representation of the property. Any areas, measurements or distances are approximate. Text, photographs and plans, where applicable, are for guidance only. Leggett and its representatives have not tested services, equipment or facilities and cannot guarantee the same.

Particulars for off-plan purchases are intended as a guide only. Final finishes to the property may vary. Purchasers are advised to engage a solicitor to check the plans and specifications as laid out in their purchase contract with the developer.



LOCAL TAXES

Taxe foncière: 1699 EUR

Taxe habitation: EUR

NOTES

DESCRIPTION

Beautiful stonehouse inside the walled part of the medieval village of Alet-les-Bains,

On the ground floor you have a stunning living room opening out to the garden.

There is a grand dining room that opens out to the garden, perfect for any family gathering or entertaining.

Ground floor

Entrance Hall = 14 m²

Living room = 38 m²

Dining room = 32 m²

Kitchen = 12.5 m²

Guest Bedroom = 18 m² + Bathroom = 6 m²

Utility room = 9.5 m²

1st Floor

Landing = 8.4 m²

Hall = 4.7 m²

Bedroom = 20 m²

Bathroom = 9.5 m²

Bedroom = 26 m²

Toilet = 3.2 m²

Dressing room/office = 9.9 m²

Terrace = 20 m²

Terrace = 26 m²

2nd Floor

Bedroom = 26 m²

Bedroom = 19.6 m²

Bedroom = 13.1 m²

Shower room = 4.2 m²

Outside you have an inground swimming pool. Garden and 2 terraces.

This house really is stunning. A lovely piece of history.

10 mins from Limoux,

40 mins Carcassonne Airport