

Modern property with equestrian facilities, 30 acres of land with stunning panoramic views. Ideal for horses.



INFORMATION

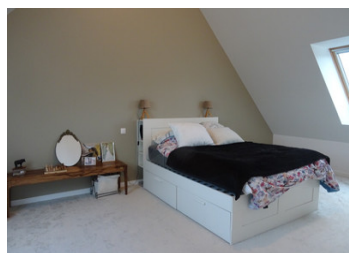
Town:	Sainte-Honorine-la-Chardon
Department:	Orne
Bed:	4
Bath:	2
Floor:	160 m2
Plot Size:	125907 m2

IN BRIEF

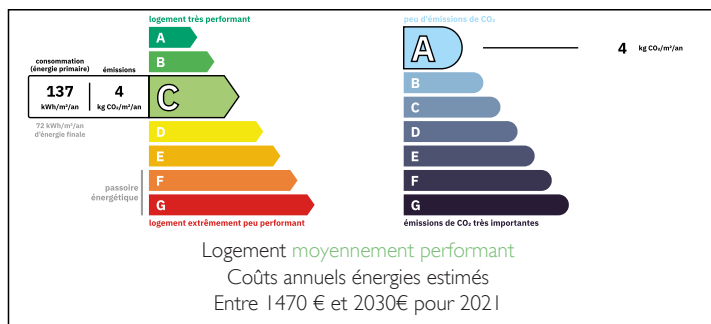
Fabulous modern property set in 30 acres of land, featuring six stables and a 40x20 sand arena, ideally located in the beautiful Suisse Normande region. Enjoy stunning views over the rolling countryside from this peaceful and private setting, at the end of a secluded lane.

The contemporary house is ready to move into and offers flexible accommodation, including four spacious bedrooms and a dedicated office space. The ground floor boasts a generous open-plan living, dining, and kitchen area—perfect for modern family living and entertaining.

A rare opportunity for equestrian enthusiasts or those simply seeking a stylish home in a spectacular rural setting.



ENERGY - DPE



NB. Quoted prices relate to euro transactions. Fluctuations in exchange rates are not the responsibility of the agency or those representing it. The agency and its representatives are not authorised to make or give guarantees relating to the property. These particulars do not form part of any contract but are to be taken as a general representation of the property. Any areas, measurements or distances are approximate. Text, photographs and plans, where applicable, are for guidance only. Leggett and its representatives have not tested services, equipment or facilities and cannot guarantee the same.

Particulars for off-plan purchases are intended as a guide only. Final finishes to the property may vary. Purchasers are advised to engage a solicitor to check the plans and specifications as laid out in their purchase contract with the developer.



LOCAL TAXES

Taxe habitation: EUR

NOTES

DESCRIPTION

Fabulous Equestrian Property in the Heart of Suisse Normande

Approached via a private lane, this beautifully presented modern property offers peace and tranquility—perfect for those seeking the very best of country living. Set in approximately 30 acres of quality, free-draining land, it's ideal for equestrian use or other livestock.

The House Includes:

Entrance Hall – With built-in storage cupboards and cloakroom (WC and basin). Features a bespoke staircase.

Ground Floor Bedroom/Office – 8.5m², flexible use as a bedroom or study.

Open Plan Living Area:

Sitting Room – 30m², bright and triple aspect, with French doors to the garden, custom-built shelving, and a large wood-burning stove.

Dining Area – 18.5m², seamlessly connected to both the sitting room and kitchen.

Kitchen – 36m², beautifully fitted and equipped to a high standard with a large central island and French doors opening to the garden.

Rear Hall – With external door and access to a utility/boot room.

First Floor:

Spacious Landing / Sitting Area – 13m² with additional storage.

Master Bedroom – 26m² with ensuite (WC installed; shower to be completed).

Bedroom 2 – 15m²