

A pretty building plot on a hill side with lovely views consisting of a meadow and a small woodland



INFORMATION

Town:	Lissac-sur-Couze
Department:	Corrèze
Bed:	0
Bath:	0
Floor:	0 m2
Plot Size:	3762 m2

IN BRIEF

This lovely plot of land has is a good position on a country hillside yet only 2 kms from the local village restaurant, 2.5 kms from a boating lake and 9 kms from the centre of Brive la Gaillarde. The plot has easy access from 2 country lanes and overlooks its own small woodland at the bottom of the meadow.

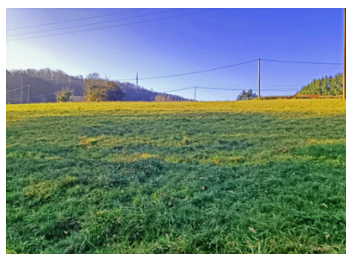


ENERGY - DPE

DPE not required.

NB. Quoted prices relate to euro transactions. Fluctuations in exchange rates are not the responsibility of the agency or those representing it. The agency and its representatives are not authorised to make or give guarantees relating to the property. These particulars do not form part of any contract but are to be taken as a general representation of the property. Any areas, measurements or distances are approximate. Text, photographs and plans, where applicable, are for guidance only. Leggett and its representatives have not tested services, equipment or facilities and cannot guarantee the same.

Particulars for off-plan purchases are intended as a guide only. Final finishes to the property may vary. Purchasers are advised to engage a solicitor to check the plans and specifications as laid out in their purchase contract with the developer.



DESCRIPTION

Land 3,762 m² hillside meadow and woodland.
Easy access from two lanes (1 each side).
Electricity at close proximity.

Amenities :-

2 km from nearest village
2,5 km from a boating lake
9 km from Brive centre
12,5 km from Brive airport
8 km from SNCF train station, Brive

Information about risks to which this property is exposed is available on the G  orisques website :
<https://www.georisques.gouv.fr>

LOCAL TAXES

Taxe habitation: EUR

NOTES