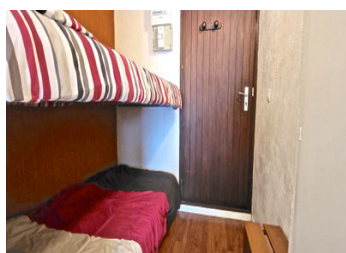
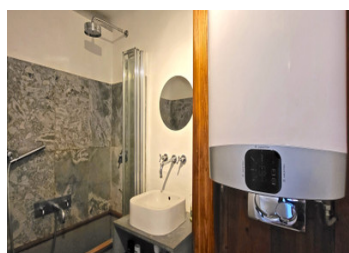
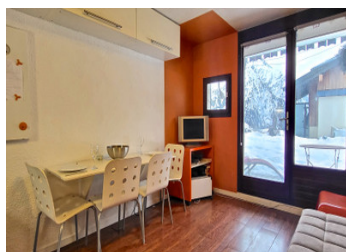


Exclusive to Leggett, a cosy studio ski apartment with beautiful mountain view, close to the ski lifts and all



INFORMATION

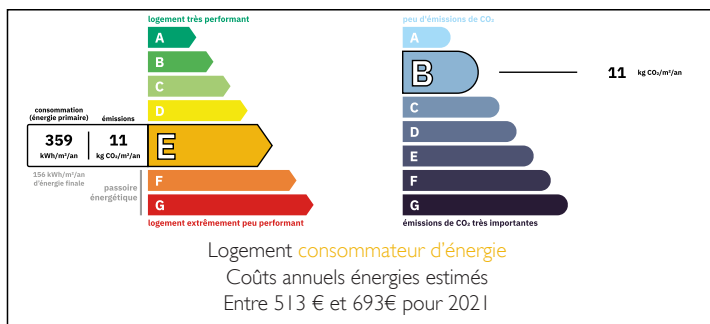
Town:	Les Deux Alpes
Department:	Isère
Bed:	0
Bath:	1
Floor:	20 m2
Outside Space:	12 m2



IN BRIEF

This cosy ski studio apartment 20m2, has a south facing patio with views towards the peak de la Muzelle, the famous glacier topped mountain that is the icon of Les Deux Alpes, towering above the buildings as you enter the main drag. The perfect escape pad with very little maintenance required but with all the benefits of being located in a great spot close to the centre of a major ski resort.

ENERGY - DPE



NB. Quoted prices relate to euro transactions. Fluctuations in exchange rates are not the responsibility of the agency or those representing it. The agency and its representatives are not authorised to make or give guarantees relating to the property. These particulars do not form part of any contract but are to be taken as a general representation of the property. Any areas, measurements or distances are approximate. Text, photographs and plans, where applicable, are for guidance only. Leggett and its representatives have not tested services, equipment or facilities and cannot guarantee the same.

Particulars for off-plan purchases are intended as a guide only. Final finishes to the property may vary. Purchasers are advised to engage a solicitor to check the plans and specifications as laid out in their purchase contract with the developer.



DESCRIPTION

The studio comprises a sitting room with kitchenette, bathroom with bath and W.C. There is a sofa bed in the main living area and bunk beds are located in the 'coin montagne' to the rear entrance. The apartment also has a private ski locker and non-allocated private parking to the rear of the property as well as shared use of a small garden area (12m2) to the front of the property.

Proximity to the ski lifts and free ski-bus pick up points facilitate an easy start to the day from your chosen location whether it be for skiing in the winter or mountain biking or glacier skiing in the summer

The annual charges - 550 €

Taxe Focière – 819€

Taxe d'Habitation – 525€

LOCAL TAXES

Taxe foncière: 819 EUR

Taxe habitation: EUR

Information about risks to which this property is exposed is available on the Géorisques website : <https://www.georisques.gouv.fr>

NOTES