

Unique opportunity of a 3-bedroom new build ski in-ski out apartment in the authentic village of Le Bettex



INFORMATION

Town:	Saint-Martin-de-Belleville
Department:	Savoie
Bed:	3
Bath:	3
Floor:	113.6 m2
Outside Space:	21 m2



IN BRIEF

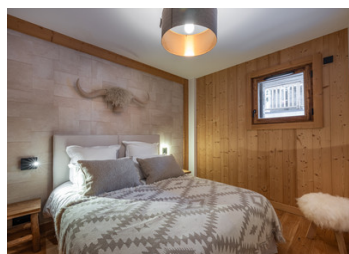
This beautifully designed 3-bedroom ski apartment boasts 113 sqm of living space and a large terrace of over 21 sqm. The apartment hosts a large, open plan kitchen, living and dining area opening out onto its west facing private terrace with mountain views. Surrounding the main living area, you will find an ensuite master bedroom with access to the terrace and two further bedrooms each with their own bathroom. The apartment has its own entrance with plenty of storage space and a pantry with laundry area. This ski in-ski out apartment is an ideal mountain haven in the French Alps with direct 3 Valley ski access from your door.

ENERGY - DPE

DPE not required.

NB. Quoted prices relate to euro transactions. Fluctuations in exchange rates are not the responsibility of the agency or those representing it. The agency and its representatives are not authorised to make or give guarantees relating to the property. These particulars do not form part of any contract but are to be taken as a general representation of the property. Any areas, measurements or distances are approximate. Text, photographs and plans, where applicable, are for guidance only. Leggett and its representatives have not tested services, equipment or facilities and cannot guarantee the same.

Particulars for off-plan purchases are intended as a guide only. Final finishes to the property may vary. Purchasers are advised to engage a solicitor to check the plans and specifications as laid out in their purchase contract with the developer.



LOCAL TAXES

Taxe habitation: EUR

NOTES

DESCRIPTION

Designed by a reputable developer, this exciting new build project is named "Naos 1570" consisting of 10 high end piste-side ski apartments and chalets ranging from 100 sqm to 264 sqm between 3 to 6 bedrooms. Each apartment is sold with private parking in an underground secure garage. This development is a rare opportunity to invest in a ski-property in a picturesque, mountain village offering excellent access to the world renowned 3 Valley ski area and it's 600km of ski slopes... Where alpine authenticity meets a world class mountain playground!

These chalets and apartments are designed to achieve a unique high-end development, be it in the features, the views, or the location. Combining modernity with authentic, mountain architecture this new build ski development is in a fantastic location just a few steps from the chair lift which whisks you to the ski resort of Les Menuires within 7 minutes. The authentic stone and wood façades allow these 3 chalets, divided into 10 properties, to blend in perfectly with the surrounding village environment. The constructors of the development have extensive experience in realising projects throughout the ski resorts and the French Alps and strive to create residences with elegant architecture in harmony with their environment.

For more information on this exciting new development and details on the properties available please do not hesitate to get in touch.

Information about risks to which this property is exposed is available on the Géorisques website : <https://www.georisques.gouv.fr>