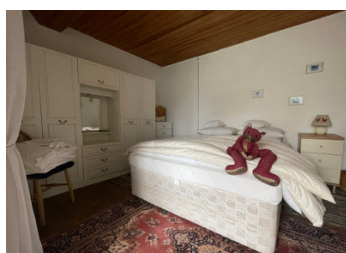
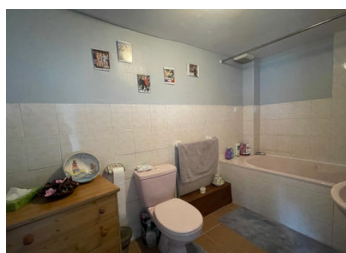


Comfortable village property - Fully Renovated to a good standard with garden on the edge of the village.



## INFORMATION

Town:	Saint-Aubin-du-Désert
Department:	Mayenne
Bed:	3
Bath:	2
Floor:	115 m2
Plot Size:	683 m2



## IN BRIEF

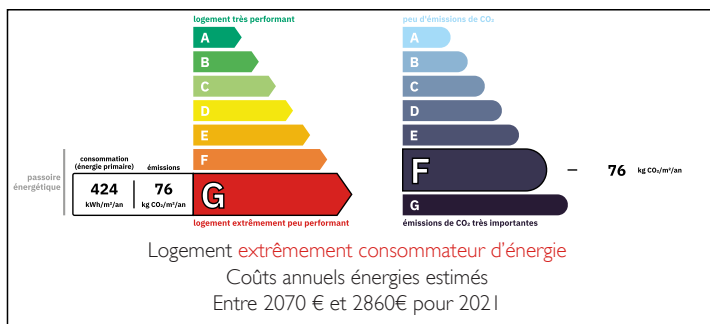
Comfortable village property - Fully Renovated to a good standard with garden.

The property is located on the edge of the village with views over the open countryside from the Garden. The house has a living room, Kitchen / dining room, shower room and cave on the ground floor and via two separate staircases three bedrooms one en-suite.

Outside is a large garage and additional out house and Garden with a chicken house and a well.

The house is located 10 minutes drive from the small town of Villaines le Juhel and 45 minutes from Alençon, Le Mans is also around 45 minutes away.

## ENERGY - DPE



NB. Quoted prices relate to euro transactions. Fluctuations in exchange rates are not the responsibility of the agency or those representing it. The agency and its representatives are not authorised to make or give guarantees relating to the property. These particulars do not form part of any contract but are to be taken as a general representation of the property. Any areas, measurements or distances are approximate. Text, photographs and plans, where applicable, are for guidance only. Leggett and its representatives have not tested services, equipment or facilities and cannot guarantee the same.

Particulars for off-plan purchases are intended as a guide only. Final finishes to the property may vary. Purchasers are advised to engage a solicitor to check the plans and specifications as laid out in their purchase contract with the developer.



## DESCRIPTION

null

-----

Information about risks to which this property is exposed is available on the Géorisques website : <https://www.georisques.gouv.fr>



## LOCAL TAXES

Taxe habitation: EUR

## NOTES