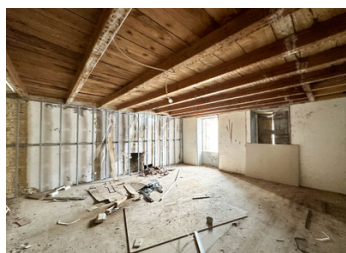
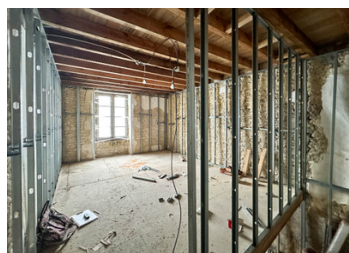


* Offer Accepted * Huge potential – renovation project to finish. 8 rooms . Gardens .



INFORMATION

Town:	Beauvais-sur-Matha
Department:	Charente-Maritime
Bed:	2
Bath:	0
Floor:	200 m2
Plot Size:	1520 m2



IN BRIEF

End of terrace property - In a large village with commerces .

Renovation has been started - with some metal framework in place in preparation for plaster boarding .

Ground floor consists of 6 rooms with a large garden to the rear .

First floor has 2 rooms with a loft space above .

House can be connected to mains drains and fibre optic internet .

ENERGY - DPE

DPE not required.

NB. Quoted prices relate to euro transactions. Fluctuations in exchange rates are not the responsibility of the agency or those representing it. The agency and its representatives are not authorised to make or give guarantees relating to the property. These particulars do not form part of any contract but are to be taken as a general representation of the property. Any areas, measurements or distances are approximate. Text, photographs and plans, where applicable, are for guidance only. Leggett and its representatives have not tested services, equipment or facilities and cannot guarantee the same.

Particulars for off-plan purchases are intended as a guide only. Final finishes to the property may vary. Purchasers are advised to engage a solicitor to check the plans and specifications as laid out in their purchase contract with the developer.



DESCRIPTION

Ground floor rooms :

Entrance 25m² , Salon 39m² , Dining room 34m² ,
Kitchen 12m² , 2 rooms 20m² each room .

First floor : Bedroom 1 - 39m² , Bedroom 2 - 20m²

Gardens with driveway access .

Information about risks to which this property is
exposed is available on the Géorisques website :
<https://www.georisques.gouv.fr>

LOCAL TAXES

Taxe habitation: EUR

NOTES