

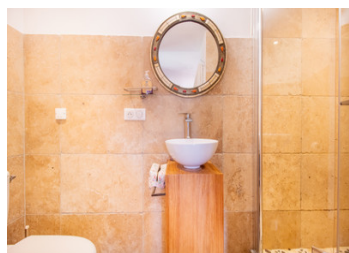
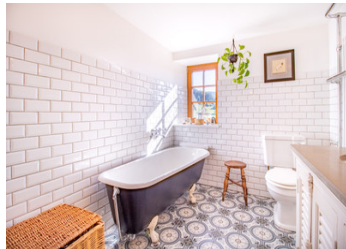
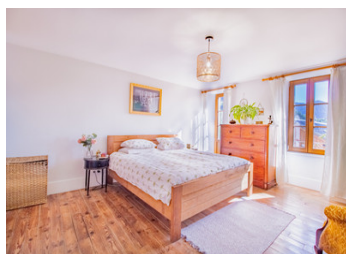
Beautifully renovated house with 6 bedrooms and gite/house with 2 bedrooms -near La Plagne



EXCLUSIVE

INFORMATION

Town:	La Plagne Tarentaise
Department:	Savoie
Bed:	8
Bath:	5
Floor:	250 m ²
Plot Size:	900 m ²



IN BRIEF

In Notre-Dame-du-Pré, this renovated village house combines old-world charm with modern comfort. Main features:

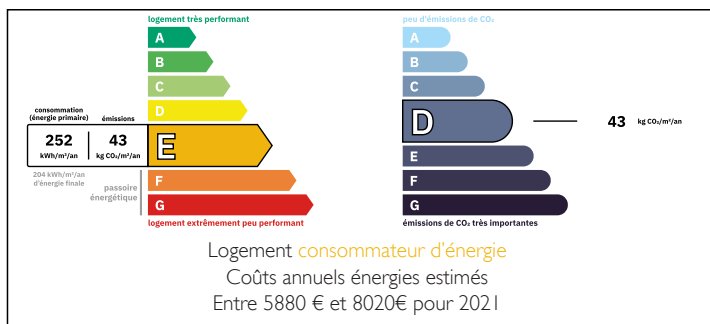
Approximately 250 m² of living space, including and adjoining two bedroom house.

Main house (200 m²): large living room with wood-burning stove, open-plan kitchen opening onto a terrace and south-west facing garden, a very bright study with wood-burning stove, 4 bedrooms including a master suite, guest area with 2 en-suite bedrooms.

Basement: laundry room, 2 cellars, a vaulted cellar and boiler room.

Adjoining house (50 m²) : living room-kitchen-dining room, 2 bedrooms, shower room and WC, ideal for accommodating family, friends or professional activities.

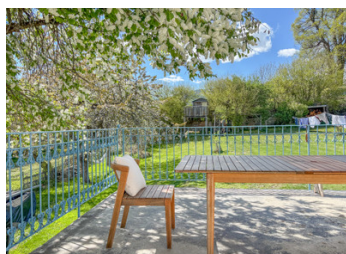
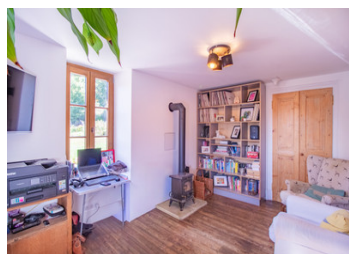
ENERGY - DPE



NB. Quoted prices relate to euro transactions. Fluctuations in exchange rates are not the responsibility of the agency or those representing it. The agency and its representatives are not authorised to make or give guarantees relating to the property. These particulars do not form part of any contract but are to be taken as a general representation of the property. Any areas, measurements or distances are approximate. Text, photographs and plans, where applicable, are for guidance only. Leggett and its representatives have not tested services, equipment or facilities and cannot guarantee the same.

Particulars for off-plan purchases are intended as a guide only. Final finishes to the property may vary. Purchasers are advised to engage a solicitor to check the plans and specifications as laid out in their purchase contract with the developer.

project.



LOCAL TAXES

Taxe habitation: EUR

NOTES

DESCRIPTION

The picturesque village of Notre-Dame-du-Pré, a short distance from La Plagne, is a peaceful village but with the vast ski area just around the corner. This exceptional property in the heart of the village combines modern living with a sympathetic renovation in a stunning setting. Its generous south-west facing garden is a haven of peace for all fresco dining, fun for the family (there's a fabulous treehouse!) or moments of relaxation.

A spacious and welcoming main house
Ground floor:

A welcoming entrance hall

A light-filled living-dining room with a wood-burning stove for cosy evenings - 33 m²

A separate study, also with a wood-burning stove, ideal for working from home or as a reading corner - 13 m²

A functional and convivial kitchen-dining room, opening onto the large terrace and garden - 32 m²

A WC with washbasin for added convenience.

A second entrance with washbasin and cloakroom.

First floor:

A master bedroom suite with shower and WC, offering privacy and comfort - 18 m²

Three additional spacious bedrooms, perfect for children or guests - 9 à 12 m²

A family bathroom with shower and double basin, designed for everyday use.

A guest area consisting of two en-suite bedrooms, each with separate shower. Separate toilet. Ideal for welcoming family or friends in the best conditions.

Basement:

A practical laundry room.

Two converted cellars, ideal for storage or a workshop.