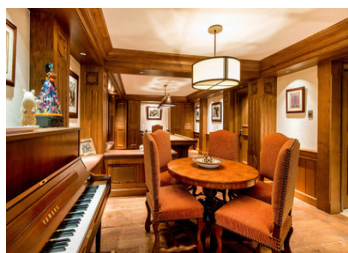
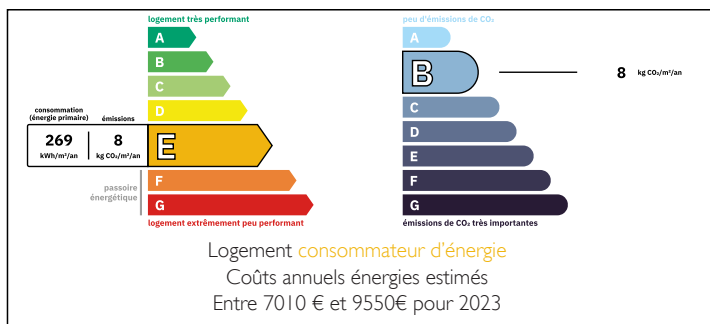


Ski in, ski out 6 bedroom Courchevel 1850 chalet with spa, games room, cinema, ski room in amazing location



ENERGY - DPE



INFORMATION

Town:	Courchevel
Department:	Savoie
Bed:	6
Bath:	6
Floor:	438 m2
Plot Size:	98 m2

IN BRIEF

An exceptional chalet of 556m2, in the most sought after ski in, ski out location in Courchevel 1850. With stunning, uninterrupted views of the ski area this chalet comprises, on the top floor:

- A large living space with breathtaking views and a sitting area, dining area, and cozy seating around the open fire
- South facing large balcony
- Well-equipped kitchen
- Convenient lift servicing each floor

The 2nd floor has:

- Luxurious master suite with stunning vistas and terrace
- Additional 3 guest, ensuite bedrooms

The 1st floor includes:

- A ski room with direct ski access to a nearby chairlift
- 1 beautiful ensuite guest bedroom with dual aspect windows
- Games room with bar, card table, piano and

NB. Quoted prices relate to euro transactions. Fluctuations in exchange rates are not the responsibility of the agency or those representing it. The agency and its representatives are not authorised to make or give guarantees relating to the property. These particulars do not form part of any contract but are to be taken as a general representation of the property. Any areas, measurements or distances are approximate. Text, photographs and plans, where applicable, are for guidance only. Leggett and its representatives have not tested services, equipment or facilities and cannot guarantee the same.

Particulars for off-plan purchases are intended as a guide only. Final finishes to the property may vary. Purchasers are advised to engage a solicitor to check the plans and specifications as laid out in their purchase contract with the developer.

-Entrance hall to parking area (6 private parking places)

International : +33 (0)5 53 60 84 88 France: 0033 (0)553 608 488 FAX: +33 (0)553 566 257 *All prices include agency fees.

Leggett Immobilier 42 Route de Ribérac 24340 La Rochebeaucourt France Tel: 08 00 73 57 45 Email: info@leggett.fr

Please get in touch...



LOCAL TAXES

Taxe habitation: EUR

NOTES

DESCRIPTION

Discover the epitomy of luxury living in the exclusive and highly coveted area of Courchevel 1850. This exceptional chalet boasts an unbeatable location with direct ski-in/ski-out access and mesmerizing panoramic views of the majestic La Saulire peak and the surrounding ski area. Prepare to be captivated by the beauty and convenience of this extraordinary property.

This chalet of 438m2 Loi carrez and an additional 118m2, giving a total usable space of 556m2 plus balconies and terraces of 98m2.

This 4 floor chalet comprises, on the top floor:

- A large living space with high ceilings and breathtaking views comprising separate sitting and dining area along with cozy seating around the open fire
- A large south facing terrace with amazing views of the ski area and surrounding mountains offers a space for outdoor dining and relaxing.
- Well-equipped kitchen for seamless dining service
- Convenient lift servicing each floor alongside a stylish stairway

The second floor has:

- Luxurious master suite with ample storage and stunning vistas and terrace
- Additional 3 guest, ensuite bedrooms all with good light and views

The first floor includes:

- A spacious ski room from where there is direct ski access to a nearby chairlift
- One beautiful guest bedroom and ensuite with dual aspect windows
- Inviting games room with a bar, card table, piano, and billiards table
- Home cinema for the ultimate entertainment experience

The lower level comprises:

- A staff ensuite double bedroom
- A spa with relaxation area, jacuzzi, steam room, and treatment room
- A gym and changing room