

Beautiful, Modern 4 bedroom Chalet with Large Gardens & AI Fresco Kitchen



INFORMATION

Town:	Séez
Department:	Savoie
Bed:	4
Bath:	2
Floor:	107 m2
Plot Size:	1560 m2



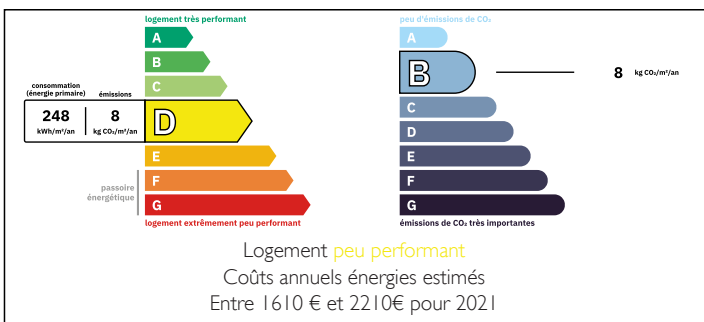
IN BRIEF

For sale in Seez, an immaculate condition, detached chalet set in large grounds.

It comprises habitable space of 107m2 and 152m2 total surface area with 4 bedrooms, 2 beautiful bathrooms, a very modern kitchen with a large, stylish open plan living area, an office and 2 cellars. There is a magnificent outdoor ornate dining space with pizza oven, barbecue, sink and dining table.

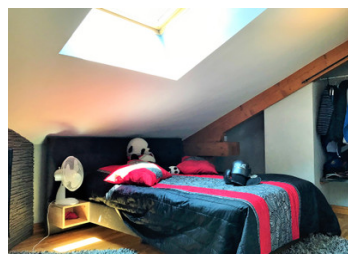
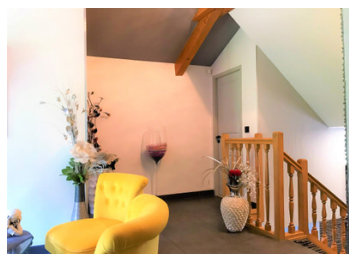
Part of the land is constructible. Private off road parking for over 5 cars. Fabulous views of the surrounding mountains.

ENERGY - DPE



NB. Quoted prices relate to euro transactions. Fluctuations in exchange rates are not the responsibility of the agency or those representing it. The agency and its representatives are not authorised to make or give guarantees relating to the property. These particulars do not form part of any contract but are to be taken as a general representation of the property. Any areas, measurements or distances are approximate. Text, photographs and plans, where applicable, are for guidance only. Leggett and its representatives have not tested services, equipment or facilities and cannot guarantee the same.

Particulars for off-plan purchases are intended as a guide only. Final finishes to the property may vary. Purchasers are advised to engage a solicitor to check the plans and specifications as laid out in their purchase contract with the developer.



DESCRIPTION

For sale in the gateway of the High Tarentaise Valley, near Seez, an exquisite 4 bedroom chalet set in a large garden. It is built over 3 floors and has been renovated with beautiful and stylish taste. The chalet has a fully equipped modern, high quality kitchen. A large open plan living area which leads out to the large garden and al fresco dining area. There are 4 double bedrooms in total. The master en suite bedroom can be found at the far end of the lounge. It has a tiled floor and a stunning cream stone feature wall. The ensuite has a walk in shower, a ceramic hand basin set on a tiled cabinet with Mediterranean influenced tiled walls and floor. There is a WC, with a small hand basin on this level.

Down from the lounge are you will find a small, yet very practical, office area which leads through into the 2 cellars, which offer great storage. They currently host the washing machine, tumble dryer and a chest freezer. A door from the cellar leads out onto the back patio.

On the entrance level there is a double bedroom on the left hand side. It has a walk in wardrobe and dressing area, ideal for guests.

The top floor hosts 2 further double bedrooms, both with velux windows that flood the sloped ceiling rooms with light. The windows have a South West exposure and are framed with wooden shutters...

LOCAL TAXES

Taxe foncière: 1402 EUR

Taxe habitation: EUR

NOTES