

House with 2 bedrooms, study, kitchen, sitting room and garage that could be converted. Large garden.

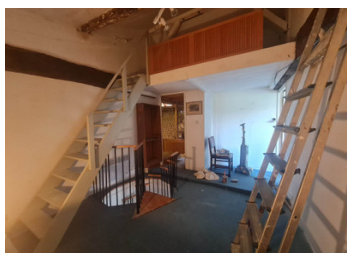


## INFORMATION

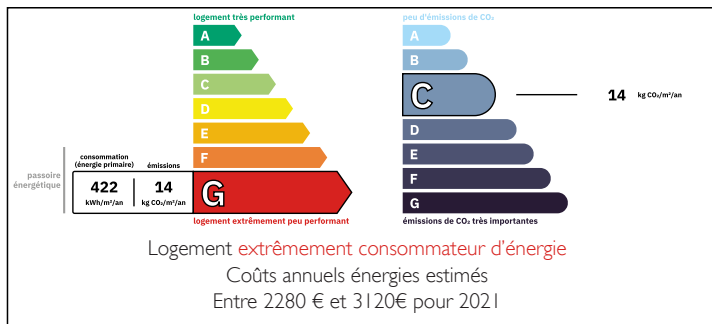
Town:	Villetoureix
Department:	Dordogne
Bed:	2
Bath:	2
Floor:	106 m2
Plot Size:	5658 m2

## IN BRIEF

Set down a very quiet country lane, with easy access to Ribérac and Verteillac. Ample parking for several cars. Gravelled courtyard area.



## ENERGY - DPE



NB. Quoted prices relate to euro transactions. Fluctuations in exchange rates are not the responsibility of the agency or those representing it. The agency and its representatives are not authorised to make or give guarantees relating to the property. These particulars do not form part of any contract but are to be taken as a general representation of the property. Any areas, measurements or distances are approximate. Text, photographs and plans, where applicable, are for guidance only. Leggett and its representatives have not tested services, equipment or facilities and cannot guarantee the same.

Particulars for off-plan purchases are intended as a guide only. Final finishes to the property may vary. Purchasers are advised to engage a solicitor to check the plans and specifications as laid out in their purchase contract with the developer.



## DESCRIPTION

### GROUND FLOOR HOUSE:

Kitchen: 16.5 m2

Living room: 16 m2

Stairwell: 6,7 m2

Bedroom: 13 m2

Shower room with wc: 2.5 m2

### 1st FLOOR:

Bedroom: 18.5 m2

Bathroom with wc: 7 m2

Hallway: 21 m2

Mezzanine: 5.5 m2

Garage: 41 m2

Carport

Land: 5658 m2

-----

Information about risks to which this property is exposed is available on the Géorisques website : <https://www.georisques.gouv.fr>

## LOCAL TAXES

**Taxe habitation: EUR**

## NOTES