

Village house for sale in Prissac (36370) - Indre

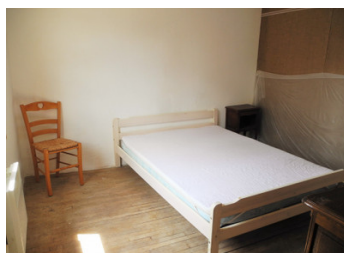


INFORMATION

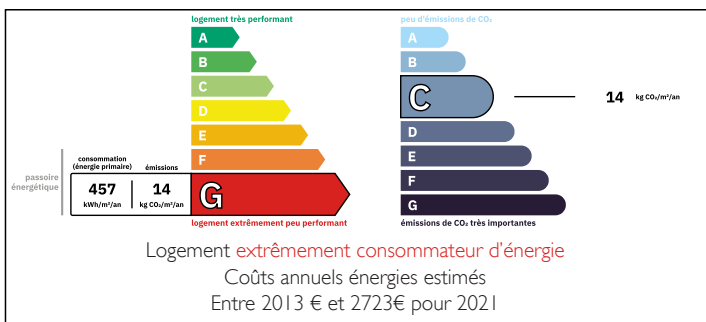
Town:	Prissac
Department:	Indre
Bed:	3
Bath:	1
Floor:	70 m2
Plot Size:	0 m2

IN BRIEF

3 bedroom village house to finish restoring in Prissac. 15 minutes from A20 motorway with easy access to Limoges airport.

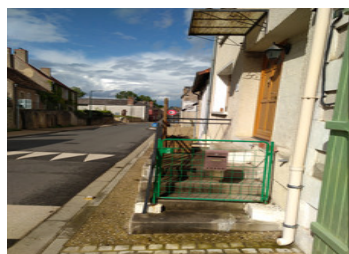


ENERGY - DPE



NB. Quoted prices relate to euro transactions. Fluctuations in exchange rates are not the responsibility of the agency or those representing it. The agency and its representatives are not authorised to make or give guarantees relating to the property. These particulars do not form part of any contract but are to be taken as a general representation of the property. Any areas, measurements or distances are approximate. Text, photographs and plans, where applicable, are for guidance only. Leggett and its representatives have not tested services, equipment or facilities and cannot guarantee the same.

Particulars for off-plan purchases are intended as a guide only. Final finishes to the property may vary. Purchasers are advised to engage a solicitor to check the plans and specifications as laid out in their purchase contract with the developer.



LOCAL TAXES

Taxe foncière: 280 EUR

Taxe habitation: EUR

NOTES

DESCRIPTION

Do you have a project in mind ?

Then read on

Situated in the centre of the village, close to the shops, this house of 70m², just needs to be finished restoring.

The ground floor offers a large living area of 25m² with a wood burning stove, a cupboard and beautiful exposed beams adorn the ceiling.

Through the internal door you arrive in an atypical kitchen with access to the former laundry room and the new bathroom.

On the first floor, a corridor leads to 2 bedrooms overlooking the main road to Saint-Benoît-du-Sault, voted one of the most beautiful villages in France.

The old bathroom, with its beautiful tiled floor, serves as a passageway to the 3rd bedroom.

The passage can easily be transformed into a study.

The window of the bedroom overlooks an inner courtyard which is not accessible.

The parquet flooring in all rooms is original.

The plumbing and electricity have been redone and you are connected to the mains drainage system.

The attic can be converted.

Although this house is partly completed, modifications are still possible.

Fancy a visit ? Give me a call !

Information about risks to which this property is exposed is available on the Géorisques website : <https://www.georisques.gouv.fr>