

**OFFER ACCEPTED** Large building comprising 3/4 lodgements, to renovate. 10 minutes from Loudéac.



## INFORMATION

<b>Town:</b>	<b>Trévé</b>
<b>Department:</b>	<b>Côtes-d'Armor</b>
<b>Bed:</b>	<b>12</b>
<b>Bath:</b>	<b>4</b>
<b>Floor:</b>	<b>333 m2</b>
<b>Plot Size:</b>	<b>5838 m2</b>



## IN BRIEF

**OFFER ACCEPTED** Situated in the calm of the countryside a few minutes drive from Trévé and nine minutes from Loudéac, this large property was destined to be a multi-generational family home. Due to a change in circumstances it was never completed and has been little occupied.

Currently arranged as three dwellings, it could be split into four. Equally it could be combined into one impressive family home. Ideal for investors, those who work in the building trade, or for someone looking to run gites.

Set in nearly 6000m2 of land, with lovely countryside views, fruit trees and with a number of outbuildings this character property is full of potential.

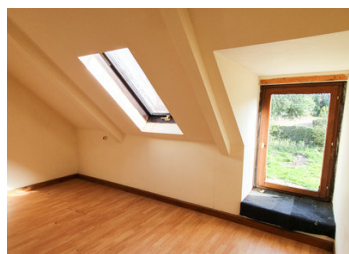
On the ground floor there are four main entrances, seven rooms, one shower room/WC. Upstairs by one of four staircases there are twelve bedrooms

## ENERGY - DPE

DPE not required.

NB. Quoted prices relate to euro transactions. Fluctuations in exchange rates are not the responsibility of the agency or those representing it. The agency and its representatives are not authorised to make or give guarantees relating to the property. These particulars do not form part of any contract but are to be taken as a general representation of the property. Any areas, measurements or distances are approximate. Text, photographs and plans, where applicable, are for guidance only. Leggett and its representatives have not tested services, equipment or facilities and cannot guarantee the same.

Particulars for off-plan purchases are intended as a guide only. Final finishes to the property may vary. Purchasers are advised to engage a solicitor to check the plans and specifications as laid out in their purchase contract with the developer.



## LOCAL TAXES

Taxe habitation: EUR

## NOTES

## DESCRIPTION

OFFER ACCEPTED Situated in the calm of the countryside a few minutes drive from Trévé and nine minutes from Loudéac, this large property was destined to be a multi-generational family home. Due to a change in circumstances it was never completed and has been little occupied.

Currently arranged as three dwellings, it could be split into four. Equally it could be combined into one impressive family home. Ideal for investors, those who work in the building trade, or for someone looking to run gites.

Set in nearly 6000m2 of land, with lovely countryside views, fruit trees and with a number of outbuildings this character property is full of potential.

On the ground floor there are four main entrances, seven rooms, one shower room/WC. Upstairs by one of four staircases there are twelve bedrooms and three bathrooms/W.C. Across the courtyard is a large atelier composed of three rooms.

This is an opportunity to purchase a large, mostly built property and transform/finish it into the home or your dreams.

-----  
Information about risks to which this property is exposed is available on the Géorisques website : <https://www.georisques.gouv.fr>