

Beautiful 3 bedroom house with 6,821 m of land leading onto a river



INFORMATION

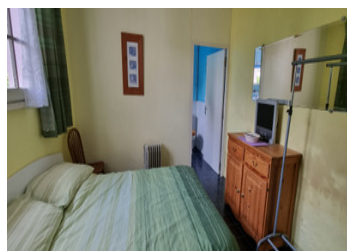
Town:	Botsorhel
Department:	Finistère
Bed:	3
Bath:	2
Floor:	85 m ²
Plot Size:	6821 m ²

IN BRIEF

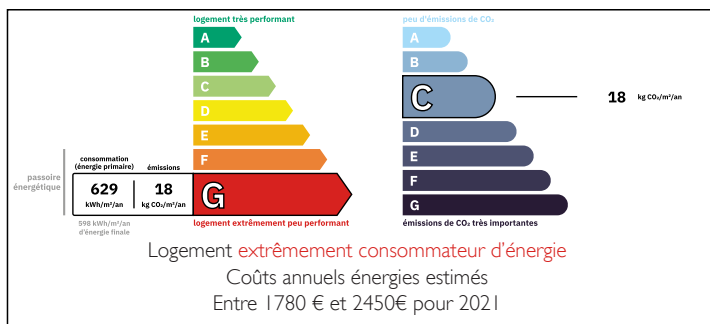
Situated in a peaceful hamlet in Botsorhel, close to Guerlesquin and only 30 minutes from the coast is this lovely 3 bedroom house.

The house sits on over 6000 m² of woodland leading down to the river.

A lovely house with plenty of offer!

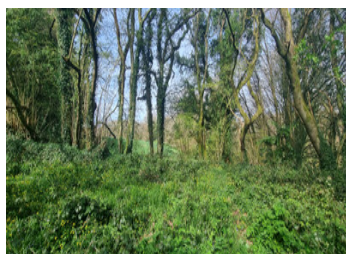


ENERGY - DPE



NB. Quoted prices relate to euro transactions. Fluctuations in exchange rates are not the responsibility of the agency or those representing it. The agency and its representatives are not authorised to make or give guarantees relating to the property. These particulars do not form part of any contract but are to be taken as a general representation of the property. Any areas, measurements or distances are approximate. Text, photographs and plans, where applicable, are for guidance only. Leggett and its representatives have not tested services, equipment or facilities and cannot guarantee the same.

Particulars for off-plan purchases are intended as a guide only. Final finishes to the property may vary. Purchasers are advised to engage a solicitor to check the plans and specifications as laid out in their purchase contract with the developer.



DESCRIPTION

The House

On the ground floor

- Living room with wood burner and dining area
- Kitchen with patio doors leading out to the garden
- Double bedroom
- Bathroom with bath, sink and WC

Upstairs

- Single bedroom
- Double bedroom
- Shower room with shower, sink and WC

Outside

- Private parking
- Garden
- Woodland leading down to the river
- Stone ruin

A wonderful house with plenty to offer!

Information about risks to which this property is exposed is available on the Géorisques website : <https://www.georisques.gouv.fr>

LOCAL TAXES

Taxe habitation: EUR

NOTES