

Charming stone built Maison de maitre with guest house, barn, in ground s/pool in tranquil location



INFORMATION

Town:	Cublac
Department:	Corrèze
Bed:	7
Bath:	3
Floor:	198 m2
Plot Size:	16542 m2

IN BRIEF

Charming maiosn de maitre on doorstep of woodlands and nature trail, no immediate neighbors. 3 buildings including 2 houses with 2 separate electricity meters .

Separate access possible

Detached barn 60m2 (2 levels) potential for workshop/office

Cellars (main house) in part garage, storage and boiler room

Outdoor terrace south facing

In ground Swimming pool 8mx4m with separate filter/pump room

bread oven

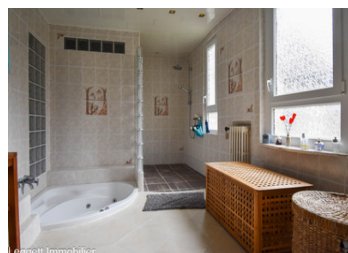
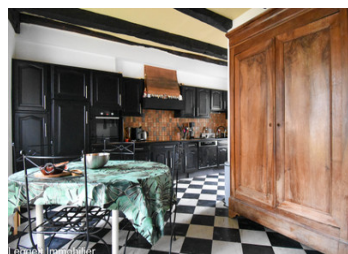
1,6 ha of land - part woods, part meadow, with spring and small stream present

Oil Central heating

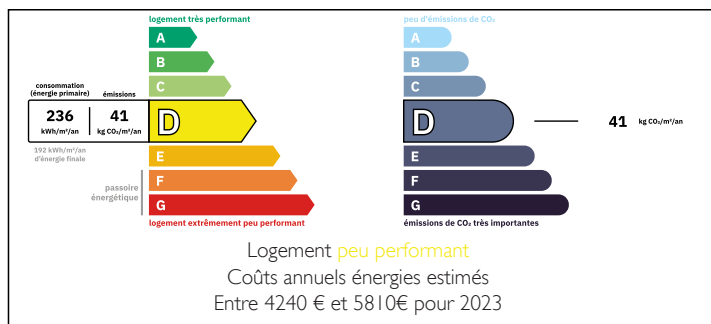
Wood burner in lounge

Double glazing

optical fiber with fast internet connection for wfh



ENERGY - DPE



NB. Quoted prices relate to euro transactions. Fluctuations in exchange rates are not the responsibility of the agency or those representing it. The agency and its representatives are not authorised to make or give guarantees relating to the property. These particulars do not form part of any contract but are to be taken as a general representation of the property. Any areas, measurements or distances are approximate. Text, photographs and plans, where applicable, are for guidance only. Leggett and its representatives have not tested services, equipment or facilities and cannot guarantee the same.

Particulars for off-plan purchases are intended as a guide only. Final finishes to the property may vary. Purchasers are advised to engage a solicitor to check the plans and specifications as laid out in their purchase contract with the developer.



DESCRIPTION

Entrance lobby 7m2
 Living / dining room 50m2 with fireplace and wood stove
 Furnished and equipped kitchen with breakfast area 25m2
 Corridor
 wc
 Master Bedroom 13m2
 En-suite bathroom 13m2 with shower and bath,
 Dressing room 9m2
 Bedroom 2- 12m2
 Stairs to next level
 Landing 28m2 relaxation area with reading / cinema area
 Corridor to
 Bedroom 3- 20m2
 Bedroom 4- 13m2
 Office 8m2
 Bathroom 6m2
 toilet
 Under roof space approx 25m2
 Grounds with Guest house
 Entrance 11m2
 toilet
 Stairs
 Living room 17m2 with fireplace
 Bedroom 1 - 19m2
 Shower room
 Library/dressing 15m2
 Upstairs
 Landing
 Bedroom 2- 12m2
 Bedroom 3- 11m2
 Bathroom with toilet

LOCAL TAXES

Taxe foncière: 1769 EUR

Taxe habitation: EUR

NOTES

Information about risks to which this property is exposed is available on the Géorisques website : <https://www.georisques.gouv.fr>