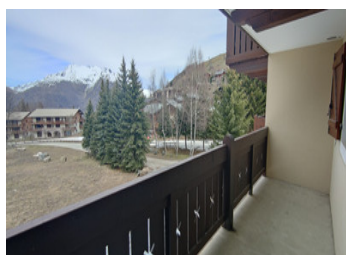
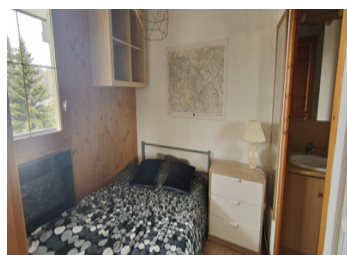


Cosy 20m2 one-bedroom apartment exclusive to Leggett. Fantastic view, and very close to the slopes.



INFORMATION

Town:	Les Deux Alpes
Department:	Isère
Bed:	1
Bath:	1
Floor:	20.45 m2
Outside Space:	8 m2



IN BRIEF

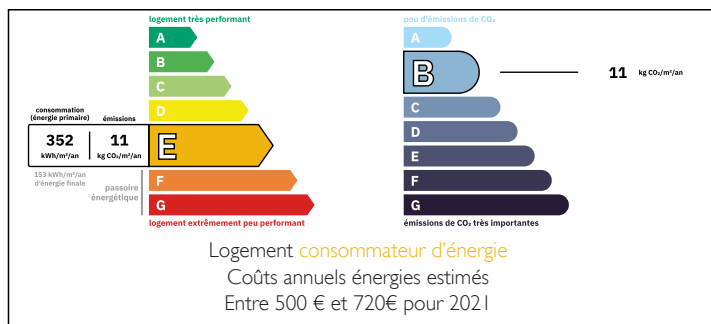
This apartment represents a chance to acquire a nice little home in les deux Alpes, or also offers a very good opportunity to invest in our charming resort.

The residence is very well located, in a quiet area, and all you have to do is put on your skis, to reach the ski slope on the front of the chalet.

The " petite aiguille " ski lift is a few meters from the apartment.

The apartment is close to the city center, about 5 minutes walk to the first restaurant, supermarket and bakery.

ENERGY - DPE



NB. Quoted prices relate to euro transactions. Fluctuations in exchange rates are not the responsibility of the agency or those representing it. The agency and its representatives are not authorised to make or give guarantees relating to the property. These particulars do not form part of any contract but are to be taken as a general representation of the property. Any areas, measurements or distances are approximate. Text, photographs and plans, where applicable, are for guidance only. Leggett and its representatives have not tested services, equipment or facilities and cannot guarantee the same.

Particulars for off-plan purchases are intended as a guide only. Final finishes to the property may vary. Purchasers are advised to engage a solicitor to check the plans and specifications as laid out in their purchase contract with the developer.

DESCRIPTION

The apartment opens onto a small entrance hall, the very pleasant living room has large bay windows, the kitchen is well equipped, and the bedroom is large enough to accommodate a double bed and leads to the bathroom.

The balcony is very spacious and offers a beautiful view of Alpe D'Huez, and on the ski slope that borders the residence.

The residence has outdoor parking.

Information about risks to which this property is exposed is available on the Géorisques website : <https://www.georisques.gouv.fr>

LOCAL TAXES

Taxe foncière: 835 EUR

Taxe habitation: EUR

NOTES