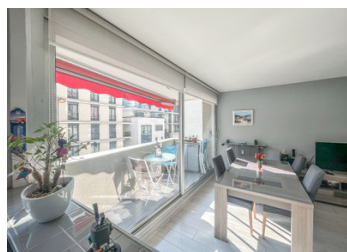


Paris XV - Sunny one bedroom flat - 60m2 - with balcony.

EXCLUSIVE



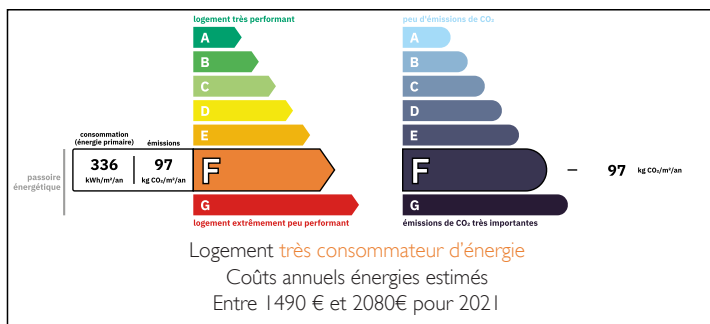
INFORMATION

Town:	Paris 15e Arrondissement
Department:	Paris
Bed:	1
Bath:	1
Floor:	60 m2
Outside Space:	4 m2

IN BRIEF

SAINT CHARLES - in a sought-after area, close to shops and transport, less than 10 minutes walk from the Eiffel Tower and the Champ de Mars. In a well maintained and secure building from 1967 - LEGGETT International is pleased to present you on the 2nd floor out of 6 with lift, a beautiful bright and crossing 2 rooms of a surface of 60m2 with a balcony of 4m2 exposed South-East is composed as follows; an entry giving on an external space without opposite, a large luminous stay of 37m2 with access on the balcony, an American kitchen entirely equipped, a storeroom which can be arranged in pantry, a bedroom with dressing room, a shower-room with wall cupboard and space for washing machine, a separate toilet. The flat is in very good condition and well-equipped with no loss...

ENERGY - DPE



NB. Quoted prices relate to euro transactions. Fluctuations in exchange rates are not the responsibility of the agency or those representing it. The agency and its representatives are not authorised to make or give guarantees relating to the property. These particulars do not form part of any contract but are to be taken as a general representation of the property. Any areas, measurements or distances are approximate. Text, photographs and plans, where applicable, are for guidance only. Leggett and its representatives have not tested services, equipment or facilities and cannot guarantee the same.

Particulars for off-plan purchases are intended as a guide only. Final finishes to the property may vary. Purchasers are advised to engage a solicitor to check the plans and specifications as laid out in their purchase contract with the developer.



DESCRIPTION

In a 1967 building, this two room apartment with a surface area of 60m² has a balcony of approximately 4m² and access to a collective terrace of the building, making it bright and unoverlooked. The charges are 940€ per quarter including hot water and heating as well as the maintenance of the common areas which are in very good condition and well maintained. 15th Arrondissement - Located on the left bank of the Seine, it includes one of the three Parisian islands, the Ile aux Cygnes where Bartholdi worked and where one of the 4 replicas of the Statute of Liberty is located. This district, close to the Eiffel Tower, includes the lowest point of Paris (28m) and is also called the Arrondissement de Vaugirard. It includes the Montparnasse Tower, the highest in Paris with its panoramic platform built in the middle of this district famous in the 1920s as the centre of the intellectual and artistic life of Paris, the Pasteur Museum which preserves part of his work in the vast flat he occupied, the Bourdelle Museum dedicated to the sculptor Emile-Antoine Bourdelle the star pupil of Rodin, the Aquaboulevard, the largest aquatic leisure centre in Europe, where the first public screening of digital cinema in Europe took place on 2 February 2000, the Porte de Versailles exhibition centre, the largest in France, and the new Baugrenelle shopping centre, which is revitalising the banks of the Seine and includes 110 well-known...

LOCAL TAXES

Taxe foncière: 812 EUR

Taxe habitation: EUR

NOTES