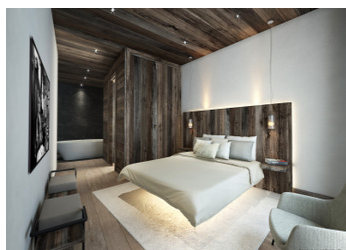


Rare to the market – Luxury new build 5-bedroom chalet in the authentic village of Saint Martin de Belleville



INFORMATION

Town:	Saint-Martin-de-Belleville
Department:	Savoie
Bed:	5
Bath:	5
Floor:	177.2 m2
Plot Size:	0 m2



IN BRIEF

This beautifully designed semi-detached 5-bedroom ski chalet is part of a prestigious new development of chalets and apartments just 250m from the shops, bars, restaurants and ski lifts of Saint Martin de Belleville. Built using high end materials with a focus on quality and attention to detail, you also have the opportunity to choose your materials and finishes so that every detail of the chalet is personalised to your tastes and preferences where possible.

This 5-bedroom all ensuite ski chalet will boast over 177 sqm of well-designed habitable living space with an additional 37 sqm destined for 3 private parking spaces. The chalet will be equipped with its very own internal lift adding a touch of luxury and comfort to the chalet.

Non contractual images

ENERGY - DPE

DPE not required.

NB. Quoted prices relate to euro transactions. Fluctuations in exchange rates are not the responsibility of the agency or those representing it. The agency and its representatives are not authorised to make or give guarantees relating to the property. These particulars do not form part of any contract but are to be taken as a general representation of the property. Any areas, measurements or distances are approximate. Text, photographs and plans, where applicable, are for guidance only. Leggett and its representatives have not tested services, equipment or facilities and cannot guarantee the same.

Particulars for off-plan purchases are intended as a guide only. Final finishes to the property may vary. Purchasers are advised to engage a solicitor to check the plans and specifications as laid out in their purchase contract with the developer.

DESCRIPTION

The chalets and apartments are being sold off plan, allowing you the opportunity, where possible, to modify the interior layout according to personal taste. Throughout the construction of the chalet, you will be invited to personalise your choice of interior materials and customise the finish, making this a true, bespoke purchase experience.

Saint Martin de Belleville has often been referred to as the hidden gem of the 3 valleys and this new development epitomises the charm of the area. Designed by a reputable, local developer these chalets and apartments are designed and finished to achieve excellence, be it in the features, the views or the location.

St Martin de Belleville is a charming, authentic mountain village in the heart of the Belleville Valley. With its traditional architecture and cobbled streets, it has managed to maintain its Alpine charm whilst also becoming a vibrant resort, becoming popular in the summer as it is in the winter. Boasting immediate access to the extensive 3 Valleys ski area, and a range of summer activities including hiking, mountain biking and rafting, it's not hard to see why the Belleville Valley is such a popular destination!

For more information on this ski chalet or any of the different units available in this new project, please do not hesitate to contact us.

Information about risks to which this property is exposed is available on the Géorisques website : <https://www.georisques.gouv.fr>

LOCAL TAXES

Taxe habitation: EUR

NOTES