

For Sale in Sainte Foy Tarentaise, 3 storey chalet currently under construction. **REDUCED FOR QUICK SALE !**

**EXCLUSIVE**



**ENERGY - DPE**

DPE not required.

## INFORMATION

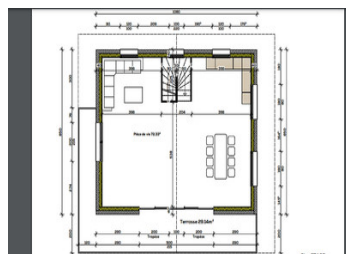
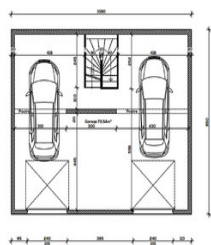
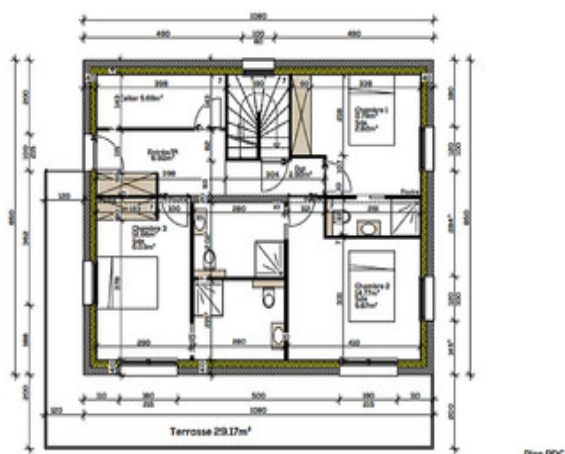
Town:	Sainte-Foy-Tarentaise
Department:	Savoie
Bed:	3
Bath:	3
Floor:	141 m2
Plot Size:	383 m2

## IN BRIEF

For sale in La Thuile, Sainte Foy Tarentaise, a Chalet currently under construction. To be built over 3 levels with integral double garage, 3 or 4 bedrooms, open plan living room, dining room and kitchen. Large garden and parking space. ## Un-Finished Project ## Remaining works to be completed by the buyer at their own expense.

NB. Quoted prices relate to euro transactions. Fluctuations in exchange rates are not the responsibility of the agency or those representing it. The agency and its representatives are not authorised to make or give guarantees relating to the property. These particulars do not form part of any contract but are to be taken as a general representation of the property. Any areas, measurements or distances are approximate. Text, photographs and plans, where applicable, are for guidance only. Leggett and its representatives have not tested services, equipment or facilities and cannot guarantee the same.

Particulars for off-plan purchases are intended as a guide only. Final finishes to the property may vary. Purchasers are advised to engage a solicitor to check the plans and specifications as laid out in their purchase contract with the developer.



Plan RDC

## LOCAL TAXES

Taxe habitation: EUR

## NOTES

## DESCRIPTION

For sale in the village of La Thuile, Sainte Foy Tarentaise, a parcel of land measuring 383 m<sup>2</sup> with a 3 storey chalet currently under construction.

This property is perfectly located just 4km from the family friendly ski resort of Sainte Foy, 17km from the centre of Val d'Isère, 15km from Tignes, 6km from Villaroger for the link to Les Arcs/La Plagne ski resorts and 15km from La Rosiere resort where you can ski over the border and into Italy.

The owner has constructed the 'shell' of the chalet comprising an integral double garage on the ground floor level with hard standing car parking space outside for 4 vehicles. A stairway will lead to the first floor where you will find the space for 3 good sized double bedrooms designed with en-suite bathrooms. There is space for a smaller 4th bedroom on this level or you may wish to convert half of the double garage space into a 4th and very spacious bedroom with en-suite bathroom.

A further stairway leads to the top floor level where you will have a grand open space for a living room, dining area and kitchen.

The architects plans and artistic impressions indicate wrap around balconies to enjoy fantastic panoramic views of the surrounding mountains.

Services are on site into the building including electricity and water connections.

All internal works including partition walls, the fitting of flooring, heating systems, bathrooms, kitchen/appliances, decorating and tiling will be at the buyers expense.

Externally, all stone work, final wood...