

SOLD BY LEGGETT IMMOBILIER Unique to the market, a prestigious new build ski in-ski out chalet



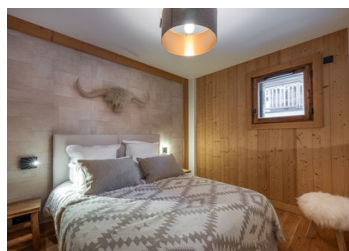
INFORMATION

Town:	Saint-Martin-de-Belleville
Department:	Savoie
Bed:	5
Bath:	5
Floor:	264.3 m2
Plot Size:	77 m2

IN BRIEF

This beautifully designed south-west facing chalet is a rare addition to the property market in the Three Valleys.

Laid over 3 floors, this 264sqm chalet with over 77sqm of terraces has been very carefully designed as a family home for both summer and winter use. On the ground floor the chalet boasts a ski room, a separate entrance, two ensuite bedrooms leading out on to a terrace of over 34 sqm with an outdoor hot tub. The chalet is also equipped with a sauna and a relaxing area ideal after a long day on the ski slopes. On the first floor there are two spacious family suites each with a double bedroom, an ensuite and an adjacent children's cabin room. On this floor there is a 5th double bedroom with dressing room and ensuite. The top floor features...



ENERGY - DPE

DPE not required.

NB. Quoted prices relate to euro transactions. Fluctuations in exchange rates are not the responsibility of the agency or those representing it. The agency and its representatives are not authorised to make or give guarantees relating to the property. These particulars do not form part of any contract but are to be taken as a general representation of the property. Any areas, measurements or distances are approximate. Text, photographs and plans, where applicable, are for guidance only. Leggett and its representatives have not tested services, equipment or facilities and cannot guarantee the same.

Particulars for off-plan purchases are intended as a guide only. Final finishes to the property may vary. Purchasers are advised to engage a solicitor to check the plans and specifications as laid out in their purchase contract with the developer.



DESCRIPTION

With direct ski access and views looking over the ski slope and Le Bettex chair lift, this luxury chalet is a very exciting and unique opportunity to the market.

Designed by a reputable developer, this exciting new build project is named "Naos 1570" consisting of 10 high end piste-side ski apartments and chalets ranging from 100 sqm to 264 sqm between 3 to 6 bedrooms. Each apartment is sold with private parking in an underground secure garage. This development is a rare opportunity to invest in a ski-property in a picturesque, mountain village offering excellent access to the world renowned 3 Valley ski area and it's 600km of ski slopes... Where alpine authenticity meets a world class mountain playground!

These chalets and apartments are designed to achieve a unique high-end development, be it in the features, the views, or the location. Combining modernity with authentic, mountain architecture this new build ski development is in a fantastic location just a few steps from the chair lift which whisks you to the ski resort of Les Menuires within 7 minutes.

The authentic stone and wood façades allow these 3 chalets, divided into 10 properties, to blend in perfectly with the surrounding village environment. The constructors of the development have extensive experience in realising projects throughout the ski resorts and the French Alps and strive to create residences with elegant architecture in harmony with their environment.

Delivery due December 2024.

For more information on this exciting new development and details on...

LOCAL TAXES

Taxe habitation: EUR

NOTES