

Rare property - Stone house, large barn & constructible land with up to 16 hectares

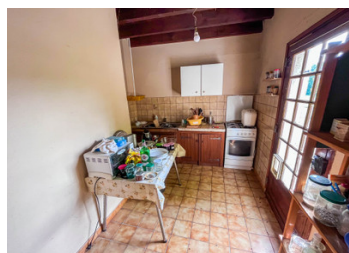


## INFORMATION

Town:	Saint-Cirq-Souillaguet
Department:	Lot
Bed:	2
Bath:	2
Floor:	110 m2
Plot Size:	160000 m2

## IN BRIEF

Rare property consisting of an old stone house, stone barn in good condition and up to 16 hectares of land (fields and woodland) surrounding the property. There is also some constructible land, a well and more.



## ENERGY - DPE

DPE not required.

NB. Quoted prices relate to euro transactions. Fluctuations in exchange rates are not the responsibility of the agency or those representing it. The agency and its representatives are not authorised to make or give guarantees relating to the property. These particulars do not form part of any contract but are to be taken as a general representation of the property. Any areas, measurements or distances are approximate. Text, photographs and plans, where applicable, are for guidance only. Leggett and its representatives have not tested services, equipment or facilities and cannot guarantee the same.

Particulars for off-plan purchases are intended as a guide only. Final finishes to the property may vary. Purchasers are advised to engage a solicitor to check the plans and specifications as laid out in their purchase contract with the developer.



## DESCRIPTION

This type of property doesn't come on the market very often.

The ground floor has a large living space, kitchen & downstairs bathroom. Upstairs you'll find two bedrooms, an office and an upstairs bathroom.

There is a large barn (90m2 on the ground floor and another 90 upstairs. There is also an enclosed area with enough space to convert into a carport for two vehicles.

The property is made up of up to 16 hectares ( you can buy as much as you like) of fields and woodland. There is part of the field that is constructible, a well, a small pond made up of rain water and tracks linking the property together.

The garden behind the house has several mature fruit trees.

This is an absolute must-visit.

-----

Information about risks to which this property is exposed is available on the Géorisques website : <https://www.georisques.gouv.fr>

## LOCAL TAXES

Taxe habitation: EUR

## NOTES