

Magnificent 8-bedroom mansion with outbuildings and heated indoor swimming pool for sale at 95620 Parmain



INFORMATION

Town:	Parmain
Department:	Val-d'Oise
Bed:	6
Bath:	3
Floor:	345 m2
Plot Size:	3904 m2

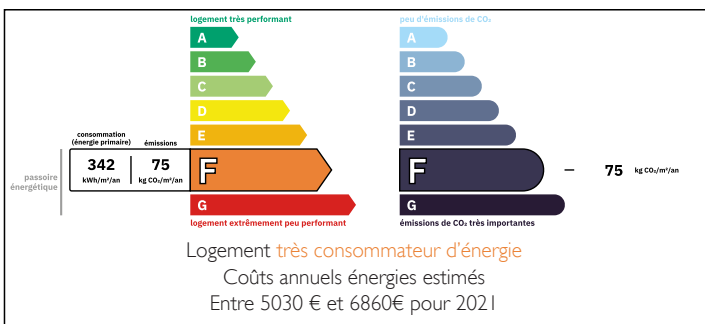


IN BRIEF

In the prestigious Parc de Parmain; from the gatehouse a driveway meanders through landscaped gardens by an independent guesthouse, an orangery and a heated indoor swimming pool before arriving at the entrance of this magnificent stone-built manor house. In a prime position overlooking the valley, the house was built by master craftsmen using the finest materials and their high standards were maintained when this luxury residence was renovated.

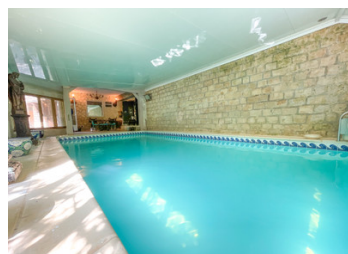
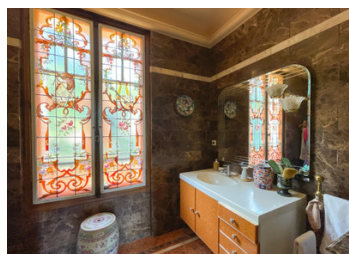
Ground floor: entrance hall, dining room, living room with coffered ceiling and access to a superb private terrace overlooking the gardens, office, kitchen and WC. First floor: Master bedroom, bathroom, boudoir, dressing room, shower room, office and WC. Second floor: 2 offices/bedrooms, 2 further bedrooms, bathroom and WC. Basement: Scullery, laundry/boiler room, workshop, wine cellar, dressing room and WC. Outside: garage, off-road parking, F2 gatehouse and F3 guesthouse. Almost 4000m2 of...

ENERGY - DPE



NB. Quoted prices relate to euro transactions. Fluctuations in exchange rates are not the responsibility of the agency or those representing it. The agency and its representatives are not authorised to make or give guarantees relating to the property. These particulars do not form part of any contract but are to be taken as a general representation of the property. Any areas, measurements or distances are approximate. Text, photographs and plans, where applicable, are for guidance only. Leggett and its representatives have not tested services, equipment or facilities and cannot guarantee the same.

Particulars for off-plan purchases are intended as a guide only. Final finishes to the property may vary. Purchasers are advised to engage a solicitor to check the plans and specifications as laid out in their purchase contract with the developer.



DESCRIPTION

GROUND FLOOR

ENTRANCE - 10.5 m² tiled floor

KITCHEN - 16.75 m² hob, oven, extractor, dishwasher, fridge freezer, marble worktop.

DINING ROOM - 20 m² stone and brick fireplace, solid oak parquet

LIVING ROOM - 26 m² double glazed door giving access to a stone terrace overlooking the park Solid oak flooring

GUEST ROOM / OFFICE - 12.25 m²

BALCONY / TERRACE - 36m² in Maximin stone

LANDING - 2,5m² Cement tiles

WC - 1,5m² With washbasin Marble floor to ceiling

DRESSING ROOM - 3.5m² 1 sink, solid wood cupboard, tiled floor

FIRST FLOOR

LANDING - 7.5m² Solid oak parquet

WC - 1m² Marble

LANDING - 3.5m² Solid oak flooring

DRESSING ROOM - 10m² Solid wood cupboards

DRESSING ROOM - 2m

BEDROOM ROOM - 12.75m² with park view

DRESSING ROOM - 2m² Solid wood cupboard

BATHROOM - 6,75m² Marble, art fittings

BEDROOM 1 - 21.5m² with French doors onto a 2.8m² balcony overlooking the park

SDE - 5.5m² in marble

OFFICE - 14.75m²

SECOND FLOOR

LANDING - 8.8m²

WC - 0.8m² tiled

LANDING - 3m² solid oak parquet

DRESSING ROOM/Cupboard in hallway - 1m² solid oak floor

Bathroom in hallway - 5.5m² with cupboards connects to office

BEDROOM 2 - 13,84m² Solid oak floor

BEDROOM 3 - 11.25m² (SH) 15m² (SU) Solid oak flooring

OFFICE - 16.25m² Solid oak flooring

LANDING between office and bathroom - 0.5m²

LOCAL TAXES

Taxe foncière: **5700 EUR**

Taxe habitation: **EUR**

NOTES