

WOW Fabulous opportunity to own this UNIQUE Farmhouse, gite, barns and Glamping Complex/small holding. 26570m

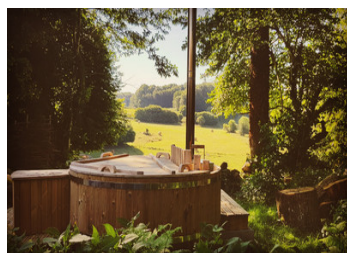
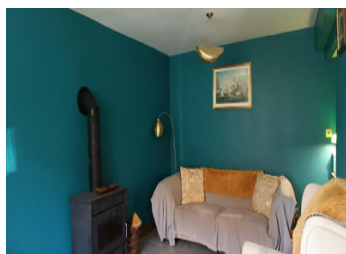
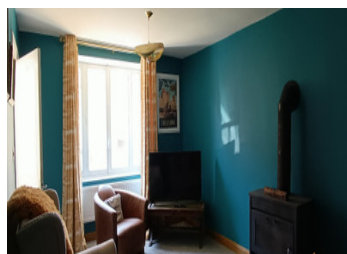


INFORMATION

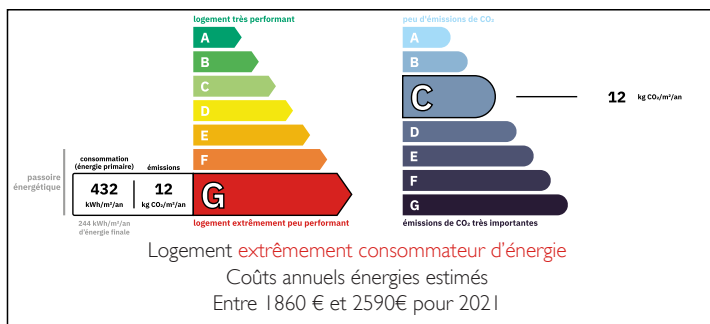
Town:	Sardent
Department:	Creuse
Bed:	4
Bath:	4
Floor:	200 m2
Plot Size:	26750 m2

IN BRIEF

This magnificent complex is a must see, you will not be disappointment with a visit. The property boasts 2 geodesic domes, both with their own wood fired hot tubs . There is also a small house to renovate, the possibilities with this property are endless. This all sits on a plot of 26570m² of land and woodland.



ENERGY - DPE



NB. Quoted prices relate to euro transactions. Fluctuations in exchange rates are not the responsibility of the agency or those representing it. The agency and its representatives are not authorised to make or give guarantees relating to the property. These particulars do not form part of any contract but are to be taken as a general representation of the property. Any areas, measurements or distances are approximate. Text, photographs and plans, where applicable, are for guidance only. Leggett and its representatives have not tested services, equipment or facilities and cannot guarantee the same.

Particulars for off-plan purchases are intended as a guide only. Final finishes to the property may vary. Purchasers are advised to engage a solicitor to check the plans and specifications as laid out in their purchase contract with the developer.



DESCRIPTION

WOW WOW WOW – Property of the Week!
One-of-a-Kind 18th-Century Estate with Glamping Potential in the Creuse

Step into another world with this absolutely unique and beautifully presented property, dating back to the 1700s, and lovingly restored to create a truly special countryside retreat. Nestled in a serene, natural setting in the heart of the Creuse department, this charming smallholding offers character, comfort, and exciting lifestyle or business opportunities.

This is a rare chance to own a fully established, versatile rural estate — combining a tastefully renovated farmhouse, income-generating guest accommodation, stunning eco-friendly glamping facilities, and a wealth of outbuildings for further development.

The Main Farmhouse – Full of Charm and Warmth
Upon entering the private, courtyard, you're welcomed by a glimpse of the harmony and potential this property has to offer. The main stone-built farmhouse is stylishly finished throughout while retaining its historical soul.

Tastefully decorated interiors combining rustic features with modern living

Wood-fired central heating, keeping the home cosy throughout the colder months

Warm and inviting living spaces that make this not just a house, but a home

The perfect base for full-time living or hosting guests.

Gîte with a View – Comfort for Guests or Rentals
The property features a separate gîte with its own private access and outdoor terrace — ideal for guests, holiday rentals, or additional family accommodation.

LOCAL TAXES

Taxe habitation: EUR

NOTES