

Semi-detached stone house with outbuildings (works required) in the countryside only 15 km to Mt Saint-Michel

EXCLUSIVE



ENERGY - DPE

DPE not required.

INFORMATION

Town:	Vieux-Viel
Department:	Ille-et-Vilaine
Bed:	4
Bath:	1
Floor:	240 m2
Plot Size:	5472 m2

IN BRIEF

Built in 1721 on 5472 m2 of land this house has undergone some renovations but was then left sadly uncared for.

It could become a wonderful family home with outbuildings offering business potential with gîtes or B&B (subject to planning permission).

This semi-detached house has kept many amazing features including 3 large granite fireplaces, hand crafted oak staircase, beautiful stone archways, exposed beams and oak floorboards.

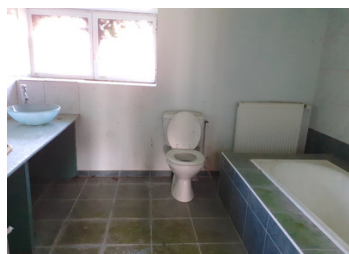
There is plenty of land with a huge hangar and an old bread oven to renovate.

The house consists of 2 rooms of approx 40 m2 on each of the 3 levels. There is a spacious extension at the back (a possible laundry /utility room or anything you could think of) and a bathroom.

On the right-hand side you have a spacious old barn to renovate (the temporary roof unfortunately

NB. Quoted prices relate to euro transactions. Fluctuations in exchange rates are not the responsibility of the agency or those representing it. The agency and its representatives are not authorised to make or give guarantees relating to the property. These particulars do not form part of any contract but are to be taken as a general representation of the property. Any areas, measurements or distances are approximate. Text, photographs and plans, where applicable, are for guidance only. Leggett and its representatives have not tested services, equipment or facilities and cannot guarantee the same.

Particulars for off-plan purchases are intended as a guide only. Final finishes to the property may vary. Purchasers are advised to engage a solicitor to check the plans and specifications as laid out in their purchase contract with the developer.



LOCAL TAXES

Taxe habitation: EUR

NOTES

DESCRIPTION

This large stone longere is situated in peaceful surroundings between Saint-Malo and Mont Saint-Michel offering business potential if needed.

It comprises 3 spacious levels:

Ground floor: kitchen (35 m²), tiled, with granite fireplace and double white ceramic sink.

Sitting room (36 m²) tiled with granite fireplace.

Back room with wide oak staircase leading to the first floor (approx. 23 m²)

Bathroom, fully tiled with bath, washbasin and WC

Oak staircase leading to

- First floor: 2 rooms of approx. 40 m²

One room has a granite fireplace

One room is concreted and the other one has oak floorboards.

- Second floor with 2 rooms of approx. 40 m² with oak floorboards, divided by an open archway

Attached old barn with great potential but with a fallen corrugated iron roofing. It could become a garage with living accommodation above for example (subject to planning permission of course).

Large dutch barn currently used by an adjacent farmer to store hay.

Location: nearest village Vieux-Viel is 1.5 km away, Pleine-Fougères with all the facilities is at 6 km. The amazing Mont-Saint-Michel is less than 20 km and the medieval town of Fougères is 40 km.

Transport:

Railway station in Pontorson (8 km), ferry port in Saint Malo (50 km) Dinard Airport is at 50 km and Rennes' airport at 65 km

Information about risks to which this property is exposed is available on the Géorisques website :