

Chalet with 7 en-suite bedrooms 243m2 at the heart of Les Deux Alpes close to lift system and amenities

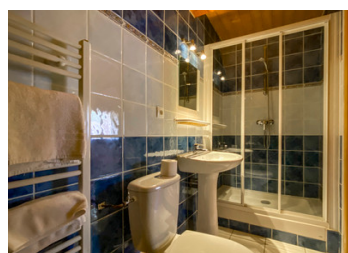
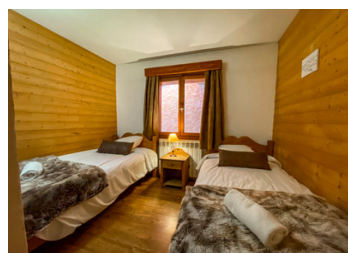
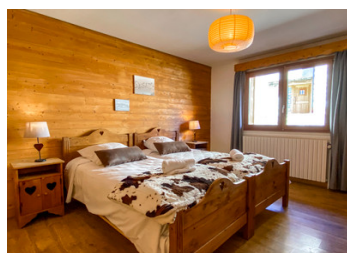


INFORMATION

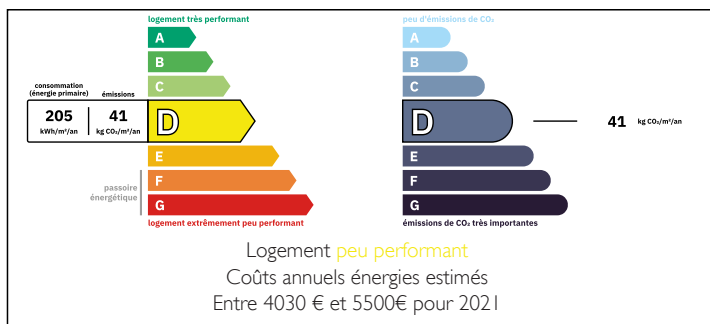
Town:	Les Deux Alpes
Department:	Isère
Bed:	7
Bath:	7
Floor:	212 m2
Plot Size:	200 m2

IN BRIEF

Chalet Alexandre is for sale. This quaint and cosy chalet was renovated by the current owner to give a traditional mountain feel. The chalet has been well insulated and finished to a high standard in a variety of natural pine woods. The chalet is ideal for large groups and can cater for up to 18 guests as two of the bedrooms are designed to cater for families or groups of four. Alexandre is Located at the heart of Les Deux Alpes. The free ski bus stops next to the chalet to take you to the nearest lift however for those who prefer a short walk to warm up the legs in the morning then the nearest lift to the main ski area is only 300 meters away.



ENERGY - DPE



NB. Quoted prices relate to euro transactions. Fluctuations in exchange rates are not the responsibility of the agency or those representing it. The agency and its representatives are not authorised to make or give guarantees relating to the property. These particulars do not form part of any contract but are to be taken as a general representation of the property. Any areas, measurements or distances are approximate. Text, photographs and plans, where applicable, are for guidance only. Leggett and its representatives have not tested services, equipment or facilities and cannot guarantee the same.

Particulars for off-plan purchases are intended as a guide only. Final finishes to the property may vary. Purchasers are advised to engage a solicitor to check the plans and specifications as laid out in their purchase contract with the developer.



LOCAL TAXES

Taxe foncière:	3200 EUR
Taxe habitation:	EUR

NOTES

DESCRIPTION

Chalet Alexandre is built over three levels and has 7 bedrooms in total each with private ensuite bathrooms. On the ground floor the chalet comprises an entrance hall / ski room, sauna, boiler room and 2 ensuite family rooms, each catering for four people. The gas central heating boiler has recently been replaced and upgraded.

On the first floor we find the spacious open plan sitting room with fireplace, the dining room and adjacent professionally equipped kitchen. On this level there is also one guest bedroom with ensuite bathroom, a small storage room and a separate WC.

On the upper level there are 3 spacious bedrooms each with spacious ensuite bathrooms.

Chalet Alexandre, sits beside her younger brother, Chalet Chartreuse in the quartier known as Venosc. Chartreuse was built adjacent on the same plot of land and is now also for sale. Both Chalets have been on long term rental with a British tour operator since the early 2000's and have been the benchmark for their catered chalets here in Les Deux Alpes. The chalets are for sale separately or both can be sold as one complete unit. Each chalet would equally make a fabulous private residence if so desired. Each can cater for 18 guests individually therefore up to 36 guests in total. Properties of this quality and size at the heart of the resort are extremely rare, if not impossible to find. The sale of these chalets presents an ideal...