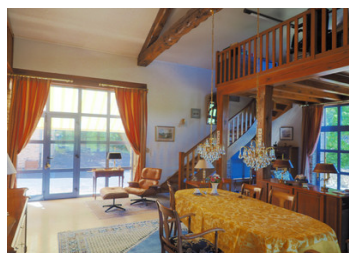
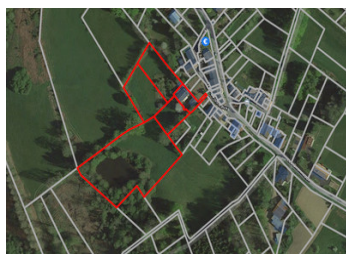


Stone, a nice view and water

EXCLUSIVE



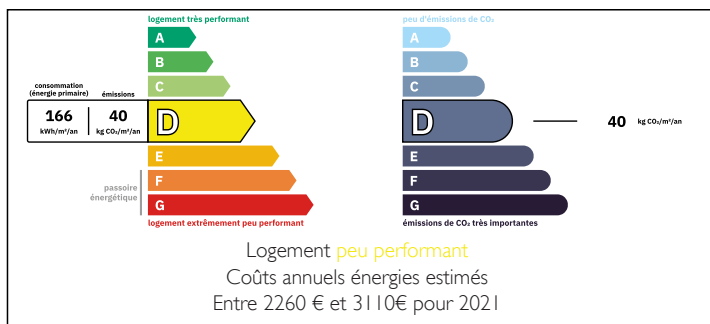
INFORMATION

Town:	Saint-Mathieu
Department:	Haute-Vienne
Bed:	3
Bath:	2
Floor:	200 m2
Plot Size:	11750 m2

IN BRIEF

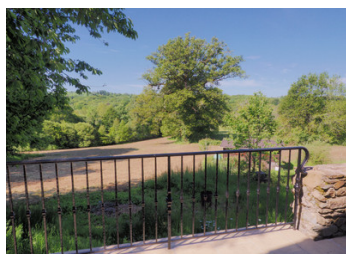
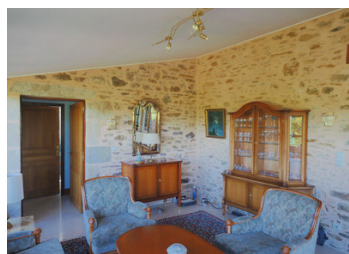
A very bright stone property with spacious interiors, natural stone floors and underfloor heating, situated in a quiet location with a lovely view over its large water feature and a charming valley. This house offers a subtle mix of real comfort and authenticity of the stone on its 200 m2 of living space .

ENERGY - DPE



NB. Quoted prices relate to euro transactions. Fluctuations in exchange rates are not the responsibility of the agency or those representing it. The agency and its representatives are not authorised to make or give guarantees relating to the property. These particulars do not form part of any contract but are to be taken as a general representation of the property. Any areas, measurements or distances are approximate. Text, photographs and plans, where applicable, are for guidance only. Leggett and its representatives have not tested services, equipment or facilities and cannot guarantee the same.

Particulars for off-plan purchases are intended as a guide only. Final finishes to the property may vary. Purchasers are advised to engage a solicitor to check the plans and specifications as laid out in their purchase contract with the developer.



LOCAL TAXES

Taxe habitation: EUR

NOTES

DESCRIPTION

Contemporary restoration of an old stone barn and its outbuilding by an architect and qualified craftsmen. The house has a south-west facing aspect, which allows you to contemplate a pretty valley without any obstruction, with its romantic sunsets. It is a happy marriage between stone masonry and modern architectural elements, providing comfort in keeping with our lifestyles. Underfloor heating makes its contribution.

At the end of the grounds a small pond, large trees and wild nature.

This beautiful property is located in the Périgord-Limousin Park.

The Périgord-Limousin Regional Nature Park covers an area of 1800 km², straddling the Haute-Vienne and Dordogne, between Limoges, Périgueux and Angoulême. It offers a preserved country and a great diversity of landscapes to be discovered in complete tranquillity. Thanks to a network of 2. Thanks to a network of 2,000 km of hiking trails and a network of thematic trails (trail on honey plants and bees in Maisonnais-sur-Tardoire, trail on rosaceous plants in Vayres-les-Roses, etc.), you can explore remarkable natural sites (wetlands, peat bogs, ponds, grasslands, etc.) all year round, (wetlands, peat bogs, ponds, limestone lawns, etc.), exceptional sites (giant crater of the Rochechouart meteorite) and discover a fauna of great interest and diversity (hoopoe, dipper, etc.). A land of tradition and know-how (especially chestnut crafts and basketry), the Park is also a place of festivities and conviviality (Mushroom and Nature Days in Bussière-Galant, Chestnut Days in Dournazac, etc.). Numerous museums, churches and castles open to the public (Brie, Châlus-Maulmont, Saint-Auvent, etc.) and...