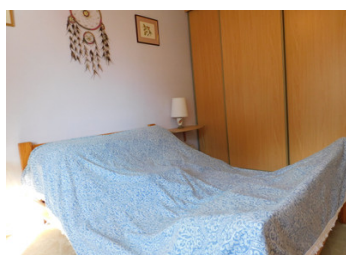
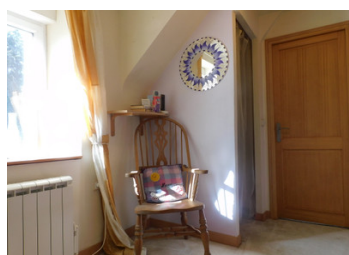


OFFER ACCEPTED A two bedroom detached house, ready to live in, overlooking an established garden



INFORMATION

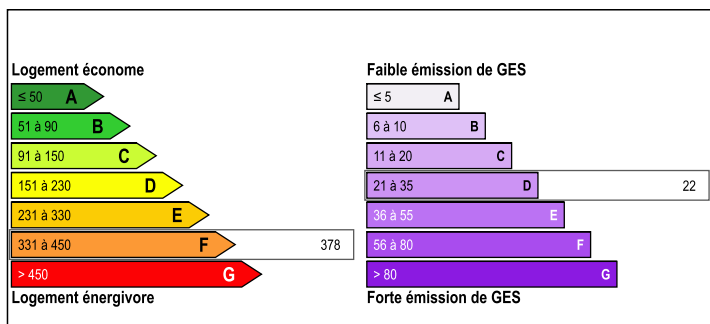
| | |
|-------------|-----------|
| Town: | Kergloff |
| Department: | Finistère |
| Bed: | 2 |
| Bath: | 1 |
| Floor: | 80 m2 |
| Plot Size: | 1542 m2 |



IN BRIEF

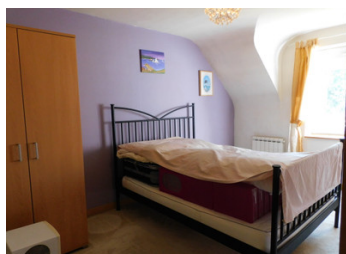
Great opportunity to buy a property, ready to live in and enjoy. Set in the countryside with the comforts of a small commune. A flat and easy to manage garden set in front of the house with an outbuilding situated at the back of the property for possible parking, storage or animal care. There are fruit trees to enjoy and a corner plot for all your vegetable growing and polytunnel.

ENERGY - DPE



NB. Quoted prices relate to euro transactions. Fluctuations in exchange rates are not the responsibility of the agency or those representing it. The agency and its representatives are not authorised to make or give guarantees relating to the property. These particulars do not form part of any contract but are to be taken as a general representation of the property. Any areas, measurements or distances are approximate. Text, photographs and plans, where applicable, are for guidance only. Leggett and its representatives have not tested services, equipment or facilities and cannot guarantee the same.

Particulars for off-plan purchases are intended as a guide only. Final finishes to the property may vary. Purchasers are advised to engage a solicitor to check the plans and specifications as laid out in their purchase contract with the developer.



DESCRIPTION

The house has a welcoming lobby which opens to the right a roomy fully fitted cottage style kitchen with all modern requirements. This has a back door and front window giving plenty of light and an electric radiator. In the lobby there is a useful pantry and also a toilet with sink and some more storage. To the left of the lobby is the front room with electric fire and electric radiator. From the back of this room is the staircase which opens up to a roomy landing which has two good sized bedrooms with electric radiators. Between these bedrooms is a substantial bathroom, with separate shower, bathroom sink and toilet with plenty of storage and a heated towel rail.

Information about risks to which this property is exposed is available on the Géorisques website : <https://www.georisques.gouv.fr>

LOCAL TAXES

Taxe foncière: 300 EUR

Taxe habitation: EUR

NOTES