

Mountain refuge for sale. Extraordinary location, with the world's largest ski area on your doorstep-3 Valleys



## INFORMATION

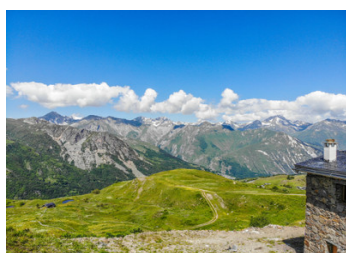
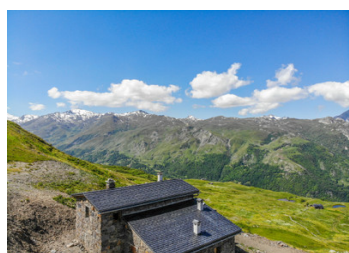
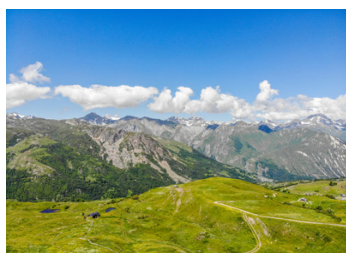
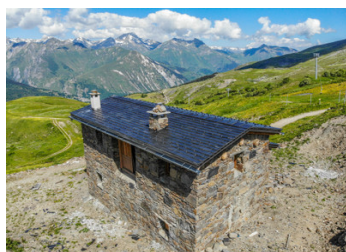
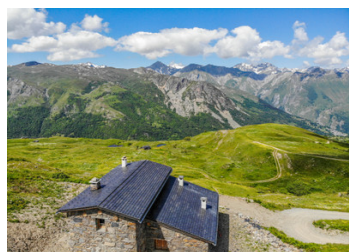
<b>Town:</b>	<b>Saint-Martin-de-Belleville</b>
<b>Department:</b>	<b>Savoie</b>
<b>Bed:</b>	<b>0</b>
<b>Bath:</b>	<b>0</b>
<b>Floor:</b>	<b>105 m2</b>
<b>Plot Size:</b>	<b>500 m2</b>

## IN BRIEF

At the heart of the Belleville Valley, this mountain chalet is surrounded by breath-taking mountain views, accessible from the Saint Martin Express chairlift- offering world renowned skiing right from its doorstep.

Sitting at approximately 173 sqm, spread across 3 levels and on a 400 sqm plot of land, this presents an incredibly rare opportunity to be the owner of a mountain chalet boasting an extraordinary setting on the piste. Included in the price are the interior finishes, which can be chosen by the buyer to truly transform this property into the mountain retreat of your dreams.

Electricity and water will be installed.



## ENERGY - DPE

DPE not required.

NB. Quoted prices relate to euro transactions. Fluctuations in exchange rates are not the responsibility of the agency or those representing it. The agency and its representatives are not authorised to make or give guarantees relating to the property. These particulars do not form part of any contract but are to be taken as a general representation of the property. Any areas, measurements or distances are approximate. Text, photographs and plans, where applicable, are for guidance only. Leggett and its representatives have not tested services, equipment or facilities and cannot guarantee the same.

Particulars for off-plan purchases are intended as a guide only. Final finishes to the property may vary. Purchasers are advised to engage a solicitor to check the plans and specifications as laid out in their purchase contract with the developer.



## DESCRIPTION

As the world's largest ski area and a popular destination in the warmer months too, the 3 Valleys is the perfect resort in which to own a beautiful mountain refuge like this one; making a fantastic base for adventures in both the winter and summer.

Please see my portfolio for all our ski properties in the Belleville Valley.

-----  
Information about risks to which this property is exposed is available on the G orisques website : <https://www.georisques.gouv.fr>

## LOCAL TAXES

Taxe habitation: EUR

## NOTES